

## Section View - F - Pump Valve Block Assembly

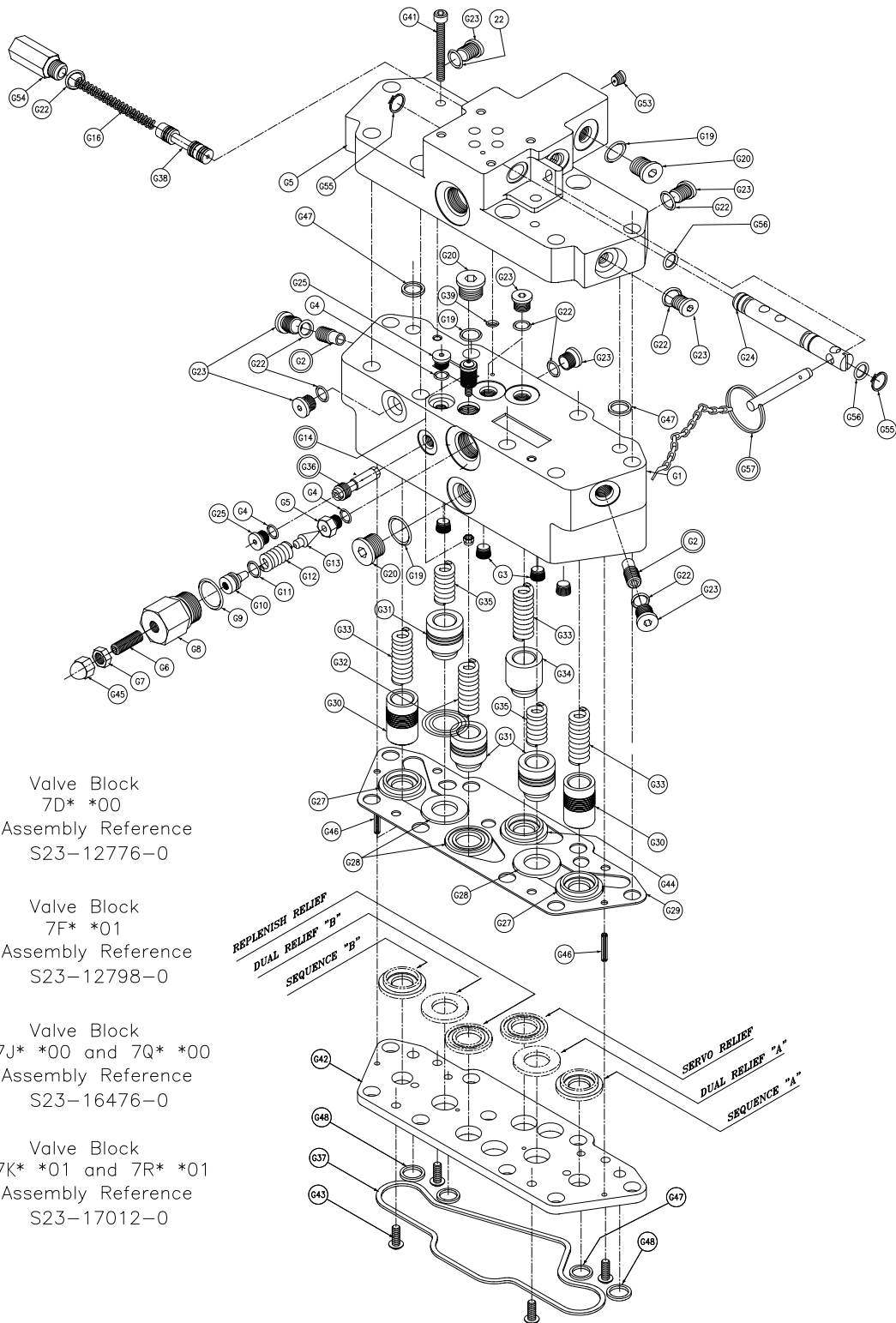
Section F P24/30 Valve Blocks Assembly							
Balloon #	Pump/Motor	Displacement	Type	Seal Code	Item #	Description	Qty
F1	P	24	P/X/S/L/R	**	033-91221-0	VALVE BLK	1
	P	30	P/X/S/L/R		033-91334-0		
F2	P	24/30	P/X/S/L/R	**	S13-40266-0	VALVE CHECK	2
F3	P	24/30	P/X/S/L/R	**	033-91249-0	ORIFICE (.0465 DIA.) PLUG	4
F4	P	24/30	P/X/S/L/R	1	691-00903-0	O RING	3
	P	24/30	P/X/S/L/R	4	674-00903-0		
	P	24/30	P/X/S/L/R	5	695-00903-0		
F5	P	24/30	P/X/S/L/R	**	033-70508-0	SEAT	1
F6	P	24/30	P/X/S/L/R	**	312-13160-0	SCREW, SOC HD	1
F7	P	24/30	P/X/S/L/R	**	335-13100-0	NUT, HEX JAM	1
F8	P	24/30	P/X/S/L/R	**	033-70545-0	GUIDE-HOUSING	1
F9	P	24/30	P/X/S/L/R	1	691-00910-0	O RING	1
	P	24/30	P/X/S/L/R	4	674-00910-0		
	P	24/30	P/X/S/L/R	5	695-00910-0		
F10	P	24/30	P/X/S/L/R	**	036-21767-0	PISTON SEAL	1
F11	P	24/30	P/X/S/L/R	1	671-00012-0	O RING	2
	P	24/30	P/X/S/L/R	4	674-00012-0		
	P	24/30	P/X/S/L/R	5	675-00012-0		
F12	P	24/30	P/X/S/L/R	**	032-91798-0	SPRING	1
F13	P	24/30	P/X/S/L/R	**	036-12288-0	CONE	1
F14	P	24/30	P/X/S/L/R	**	S13-43240-0	SERVO STRAINER	1
F19	P	24/30	P/X/S/L/R	1	691-00906-0	O RING	1
	P	24/30	P/X/S/L/R	4	674-00906-0		
	P	24/30	P/X/S/L/R	5	695-00906-0		
F20	P	24/30	P/X/S/L/R	**	488-35003-0	PLUG	1
F21	P	24	P/X/S/L/R	**	230-82226-0	PIN 1/8 X 4/8	1
	P	30	P/X/S/L/R	**	033-92868-0	PIN .156 X .615	
F22	P	24/30	P/X/S/L/R	1	691-00904-0	O RING	5
	P	24/30	P/X/S/L/R	4	674-00904-0		
	P	24/30	P/X/S/L/R	5	695-00904-0		
F23	P	24/30	P/X/S/L/R	**	488-35001-0	PLUG	5
F25	P	24/30	P/X/S/L/R	**	488-35049-0	PLUG	2
F27	P	24/30	P/X/S/L/R	**	033-70507-0	SEAT SEQ REL	2

Continued on next page.

## Section View - F - Pump Valve Block Assembly

Section F P24/30 Valve Blocks Assembly							
Balloon #	Pump/ Motor	Displacement	Type	Seal Code	Item #	Description	Qty
F28	P	24/30	P/X/S/L/R	**	033-70500-0	REPL. + SERVO SEAT	4
F29	P	24/30	P/X/S/L/R	**	033-91193-0	GASKET	1
F30	P	24/30	P/X/S/L/R	**	033-72378-0	POPPET, SEQ.	2
F31	P	24/30	P/X/S/L/R	**	033-72379-0	POPPET, DUAL + REPL	4
F32	P	24/30	P/X/S/L/R	**	033-22141-0	SPRING, REPL	1
F33	P	24/30	P/X/S/L/R	**	033-70512-0	SPRING, SEQ./SERVO	2
F34	P	24/30	P/X/S/L/R	**	033-70482-0	SPRING RETAINER	1
F35	P	24/30	P/X/S/L/R	**	033-71086-0	SPRING, DUAL RELIEF	3
F36	P	24/30	P/X/S/L/R	**	S23-12814-0	VALVE, REPLEN PILOT	1
F37	P	24/30	P/X/S/L/R	1	671-00050-0	O RING	1
	P	24/30	P/X/S/L/R	4	674-00050-0		
	P	24/30	P/X/S/L/R	5	675-00050-0		
F42	P	24/30	P/X/S/L/R	**	033-91422-0	RETAINER PLATE	1
F43	P	24/30	P/X/S/L/R	**	353-25078-0	SCREW, BUTTON HD	4
F45	P	24/30	P/X/S/L/R	**	327-25006-0	NUT, ACORN	1
F46	P	24/30	P/X/S/L/R	**	325-08120-0	PIN, ROLL 1/8 X 3/4 LG	2
F47	P	24/30	P/X/S/L/R	1	671-00013-0	O RING	2
	P	24/30	P/X/S/L/R	4	674-00013-0		
	P	24/30	P/X/S/L/R	5	675-00013-0		
F48	P	24/30	P/X/S/L/R	1	671-00014-0	O RING	2
	P	24/30	P/X/S/L/R	4	674-00014-0		
	P	24/30	P/X/S/L/R	5	675-00014-0		
F49	P	24/30	P/X/S/L/R	**	306-40169-0	SCREW HHC	8

Section View - G - Pump Valve Block Assembly for 700 Control



Valve Block  
7D\* \*00  
Assembly Reference  
S23-12776-0

Valve Block  
7F\* \*01  
Assembly Reference  
S23-12798-0

Valve Block  
7J\* \*00 and 7Q\* \*00  
Assembly Reference  
S23-16476-0

Valve Block  
7K\* \*01 and 7R\* \*01  
Assembly Reference  
S23-17012-0



## Section View - G - Pump Valve Block Assembly for 700 Control

Section G P24/30 Valve Blocks Assemblies for 700 Control					
Balloon #	Primary 700 Control	Seal Code	Item #	Description	Qty
G1	ALL	**	033-91335-0	VALVE BLK	1
G2	ALL	**	S13-40266-0	VALVE CHECK	2
G3	ALL	**	033-91249-0	ORIFICE (.0465 DIA.) PLUG	4
G4	ALL	1	691-00903-0	O RING	3
	ALL	4	674-00903-0		
	ALL	5	695-00903-0		
G5	ALL	**	033-70508-0	SEAT	1
G6	ALL	**	312-13160-0	SCREW, SOC HD	1
G7	ALL	**	335-13100-0	NUT, HEX JAM	1
G8	ALL	**	033-70545-0	GUIDE-HOUSING	1
G9	ALL	1	691-00910-0	O RING	1
	ALL	4	674-00910-0		
	ALL	5	695-00910-0		
G10	ALL	**	036-21767-0	PISTON SEAL	1
G11	ALL	1	671-00012-0	O RING	2
	ALL	4	674-00012-0		
	ALL	5	675-00012-0		
G12	ALL	**	032-91798-0	SPRING	1
G13	ALL	**	036-12288-0	CONE	1
G14	ALL	**	S13-43240-0	SERVO STRAINER	1
G15	7F* **01	**	033-54446-0	MANIFOLD FOR SHUTOFF	1
	7D* **00	**	033-54389-0	MANIFOLD LESS SHUTOFF	
	7K* **01, 7R* **01	**	033-93376-0	MANIFOLD FOR SHUTOFF	
	7J* **00, 7Q* **00	**	033-62887-0	MANIFOLD LESS SHUTOFF	
G16	ALL	**	225-92083-0	SPRING	1
G19	ALL	1	691-00906-0	O RING	3
	ALL	4	674-00906-0		
	ALL	5	695-00906-0		
G20	ALL	**	488-35041-0	PLUG	3
G22	ALL	1	691-00904-0	O RING	11
	ALL	4	674-00904-0		
	ALL	5	695-00904-0		
G23	ALL	**	488-35001-0	PLUG	10

Continued on next page.

## Section View - G - Pump Valve Block Assembly for 700 Control

Section G P24/30 Valve Blocks Assemblies for 700 Control					
Balloon #	Primary 700 Control	Seal Code	Item #	Description	Qty
G24	ALL	**	033-93866-0	SERVO SPOOL	1
G25	ALL	**	488-35049-0	PLUG	2
G27	ALL	**	033-70507-0	SEAT SEQ REL	2
G28	ALL	**	033-70500-0	REPL. + SERVO SEAT	3
G29	ALL	**	033-91193-0	GASKET	1
G30	ALL	**	033-72378-0	POPPET, SEQ.	2
G31	ALL	**	033-72379-0	POPPET, DUAL + REPL	3
G32	ALL	**	033-22141-0	SPRING, REPL	1
G33	ALL	**	033-70512-0	SPRING, SEQ./SERVO	3
G34	ALL	**	033-54398-0	POPPET SERVO	1
G35	ALL	**	033-71086-0	SPRING, DUAL RELIEF	2
G36	ALL	**	S23-12814-0	VALVE, REPLEN PILOT	1
G37	ALL	1	671-00050-0	O RING	1
	ALL	4	674-00050-0		
	ALL	5	675-00050-0		
G38	ALL	**	033-54392-0	SPOOL	1
G39	ALL	1	671-00008-0	O RING	2
	ALL	4	674-00008-0		
	ALL	5	675-00008-0		
G41	ALL	**	358-10180-0	SCREW SHC	2
G42	ALL	**	033-91422-0	RETAINER PLATE	1
G43	ALL	**	353-25078-0	SCREW, BUTTON HD	4
G44	ALL	**	033-54399-0	SERVO SEAT	1
G45	ALL	**	327-25006-0	NUT, ACORN	1
G46	ALL	**	325-08120-0	PIN, ROLL 1/8 X 3/4 LG	2
G47	ALL	1	671-00013-0	O RING	2
	ALL	4	674-00013-0		
	ALL	5	675-00013-0		
G48	ALL	1	671-00014-0	O RING	2
	ALL	4	674-00014-0		
	ALL	5	675-00014-0		
G50	ALL	**	449-00013-0	PLUG SHIPPING	1

Continued on next page.

## Section View - G - Pump Valve Block Assembly for 700 Control

Section G P24/30 Valve Blocks Assemblies for 700 Control					
Balloon #	Primary 700 Control	Seal Code	Item #	Description	Qty
G53	ALL	**	033-25528-0	ORIFICE	1
G54	ALL	**	035-54400-0	PLUG	1
G55	7F* *01, 7K* *01, 7R* *01	**	356-31043-0	RING RETAINING	2
G56	7F* *01, 7K* *01, 7R* *01	1	671-00011-0	O RING	2
	7F* *01, 7K* *01, 7R* *01	4	674-00011-0		
	7F* *01, 7K* *01, 7R* *01	5	675-00011-0		
G57	7F* *01, 7K* *01, 7R* *01	**	S23-02208-0	PIN	1