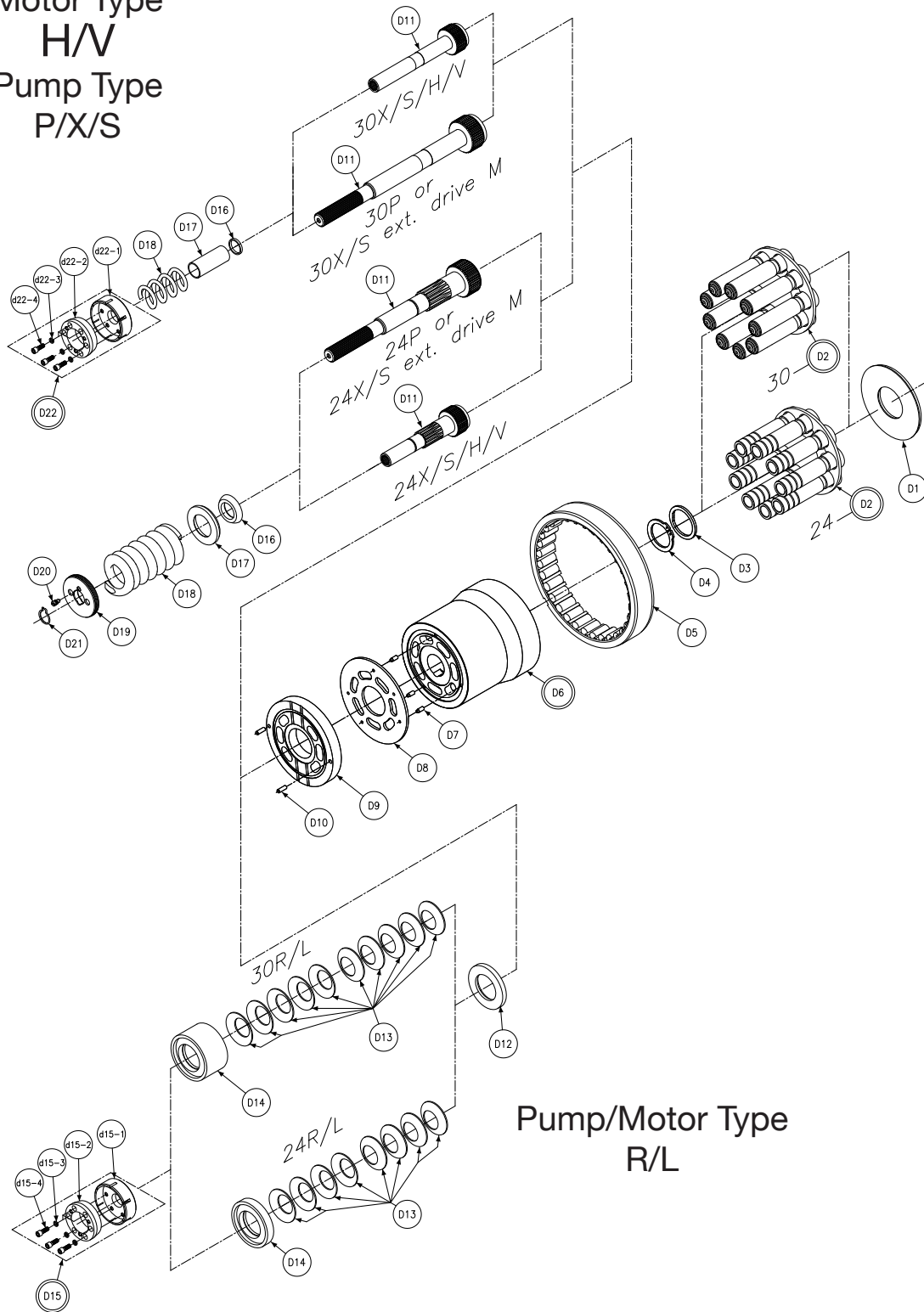


Motor Type
H/V
Pump Type
P/X/S



Section View - D - Rotating Group Assembly

Balloon #	Pump/Motor	Displacement	Type	Efficiency	Rotation	Ext. Drive X/S only	Item #	Description	Qty
D1	P/M	**	P/S/X/ R/L/H/V	**	**	**	033-91653-0	CREEP PLATE	1
D2	P/M	24	P/S/X/ R/L/H/V	**	**	**	S13-44470-0	PISTON SHOE & RETAINER ASSEMBLY	1
	P/M	24	P/S/X/ R/L/H/V	H	**	**	S23-17399-0		
	P/M	30	P/S/X/ R/L/H/V	**	**	**	S23-12684-0		
D3	P/M	24/30	P/S/X/ R/L/H/V	**	**	**	033-59805-0	THRUST WASHER	1
D4	P/M	24/30	P/S/X/ R/L/H/V	**	**	**	033-92754-0	RET RING .078/.077 THK BLACK	SELECT FIT ONE ONLY
	P/M	24/30	P/S/X/ R/L/H/V	**	**	**	033-59746-0	RET RING .079/.081 THK BLUE	
	P/M	24/30	P/S/X/ R/L/H/V	**	**	**	033-71717-0	RET RING .081/.083 THK RED	
	P/M	24/30	P/S/X/ R/L/H/V	**	**	**	033-91130-0	RET RING .083/.085 THK. WHITE	
	P/M	24/30	P/S/X/ R/L/H/V	**	**	**	035-71717-0	RET RING .085/.087 THK GREEN	
	P/M	24/30	P/S/X/ R/L/H/V	**	**	**	035-71716-0	RET RING .087/.089 THK YELLOW	
D6	P/M	24	P/S/X/ R/L/H/V	**	**	**	S23-12091-0	CYLINDER BARREL	1
	P/M	24	P/S/X/ R/L/H/V	**	**	**	S23-12170-0		
D7	P/M	24/30	P/S/X/ R/L/H/V	**	**	**	033-59747-0	FACE PLATE PIN	3
D8	P/M	24	P/S/X/ R/L/H/V	**	**	**	033-71748-0	FACE PLATE	1
	P/M	30	P/S/X/ R/L/H/V	**	**	**	033-57571-0		
D9	P	24	P/S/ X/R/L	**	CW	**	033-71752-0	PORT PLATE	1
	P	24	P/S/ X/R/L	**	CCW	**	033-71753-0		
	P	24	P/S/ X/R/L	H	CW	**	033-93581-0		
	P	24	P/S/ X/R/L	H	CCW	**	033-93580-0		
	P	30	P/S/ X/R/L	**	CW	**	033-91238-0		
	P	30	P/S/X/ R/L	**	CCW	**	033-91237-0		
	M	24	H/V	**	N	**	033-71751-0		
	M	30	H/V	**	N	**	033-91149-0		

Continued on next page.



Section View - D - Rotating Group Assembly

Balloon #	Pump/Motor	Displacement	Type	Efficiency	Rotation	Ext. Drive X/S only	Item #	Description	Qty
D10	P/M	24/30	P/S/X/ R/L/H/V	**	**	**	324-21610-0	DOWEL PIN	2
D11	P/M	24	P/X/S	**	**	M	033-57257-0	* AUX. HOLDDOWN SHAFT	1
	P/M	30	P/X/S	**	**	M	033-91188-0		
	P/M	24	S/X/H/V	**	**	**	033-93535-0	** AUX. HOLDDOWN SHAFT	1
	P/M	30	S/X/H/V	**	**	**	033-93536-0		
D12	P/M	24/30	R/L	**	**	**	033-92790-0	WASHER DISC SPRING BACKUP	1
D13	P/M	24	R/L	**	**	**	033-92725-0	DISC SPRING BARREL HOLDDOWN	8
	P/M	30	R/L	**	**	**	033-92725-0		10
D14	P/M	24	R/L	**	**	**	033-92916-0	RETAINER BBL HD DISC SPG	1
	P/M	30	R/L	**	**	**	033-92788-0		
D15	P/M	24/30	R/L	**	**	**	S23-17350-0	BARREL HOLDDOWN NUT	1
d15-1	P/M	24/30	R/L	**	**	**	033-94648-0	NUT BARREL HLDOWN	1
d15-2	P/M	24/30	R/L	**	**	**	033-94649-0	INSERT BARREL HOLDDOWN	1
d15-3	P/M	24/30	R/L	**	**	**	358-12100-0	SCREW, SHC 1/4-20 UNC X	6
d15-4	P/M	24/30	R/L	**	**	**	346-60036-0	LOCKWASHER 1/4 HI COLLAR	6
D16	P/M	24	P/S/X/ H/V	**	**	M	033-57147-0	SPHERICAL SEAT	1
	P/M	30	P/S/X/ H/V	**	**	M	033-95942-0	STOP, BARREL	1
D17	P/M	24	P/S/X/ H/V	**	**	M	033-57138-0	SPRING RETAINER	1
	P/M	30	P/S/X/ H/V	**	**	M	350-10171-0	WASHER	1
D18	P/M	24	P/S/X/ H/V	**	**	M	033-57136-0	SPRING, BARREL HOLDDOWN	1
	P/M	30	P/S/X/ H/V	**	**	M	033-95941-0		
D19	P/M	24	P/S/X/ H/V	**	**	M	033-57139-0	HOLDDOWN ADJ SCREW	1
D20	P/M	24	P/S/X/ H/V	**	**	M	033-57241-0	HOLDDOWN ADJ SCREW LOCK	1
D21	P/M	24	P/S/X/ H/V	**	**	M	033-57239-0	LOCK RING	1

Continued on next page.



Section View - D - Rotating Group Assembly

Balloon #	Pump/Motor	Displacement	Type	Efficiency	Rotation	Ext. Drive X/S only	Item #	Description	Qty
D22	P/M	30	P/S/X/H/V	**	**	M	S23-19788-0	BARREL HOLDDOWN NUT	1
d22-1	P/M	30	P/S/X/H/V	**	**	M	033-95972-0	NUT BARREL HLDOWN	1
d22-2	P/M	30	P/S/X/H/V	**	**	M	033-94649-0	INSERT BARREL HOLDDOWN	1
d22-3	P/M	30	P/S/X/H/V	**	**	M	358-12100-0	SCREW, SHC 1/4-20 UNC X	6
d22-4	P/M	30	P/S/X/H/V	**	**	M	346-60036-0	LOCKWASHER 1/4 HI COLLAR	6

IMPORTANT NOTES: 1,2,3,4

- 1.* AUXILIARY DRIVE SHAFT 033-57257-0 MUST BE USED WITH REAR COVER ASSEMBLY S23-15182 FOR P24 "P" TYPE PUMPS OR P24 "X" OR "S" TYPE PUMPS WITH "M", (BLANKING PLATE).
- 2.* AUXILIARY DRIVE SHAFT 033-91188-0 MUST BE USED WITH REAR COVER ASSEMBLY S23-15122 FOR P30 "P" TYPE PUMPS OR P30 "X" OR "S" TYPE PUMPS WITH "M", (BLANKING PLATE).
- 3.** AUXILIARY DRIVE SHAFT 033-93535-0 MUST BE USED WITH REAR COVER ASSEMBLY S23-15183, (SAE-B EXT MOUNT), OR S23-15172, (SAE-C EXT. MOUNT), FOR P24 "X" & "S" TYPE PUMPS ONLY
- 4.** AUXILIARY DRIVE SHAFT 033-93536-0 MUST BE USED WITH REAR COVER ASSEMBLY S23-15125, (SAE-B EXT MOUNT), OR S23-17546, (SAE-C EXT. MOUNT), FOR P30 "X" & "S" TYPE PUMPS ONLY

Major Rotating Group Kit Composed of items: D1,D2,D5,D6.D7.D8,D9 AND D10				
Pump/Motor	Displacement	Type	Rotation	Part Number
P	24	P/S/X/R/L	CW	S23-17111-0
P	24	P/S/X/R/L	CCW	S23-17112-0
P	30	P/S/X/R/L	CW	S23-17113-0
P	30	P/S/X/R/L	CCW	S23-17114-0
M	24	H/V	N	S23-17115-0
M	30	H/V	N	S23-17116-0

Barrel Hold Down Kit S23-17253-0 and S23-17255-0 Composed of items: D11 AND D18 S23-17254-0 and S23-17256-0 Composed of items: D11, D16, D17, D18 and d22-1 No Kit available for R/L versions				
Pump/Motor	Displacement	Type	Ext Drive	Part Number
P	24	P	-	S23-17253-0
		X/S	M	
P	30	P	-	S23-17254-0
		X/S	M	
P	24	S/X/H/V	**	S23-17255-0
P	30	S/X/H/V	**	S23-17256-0

