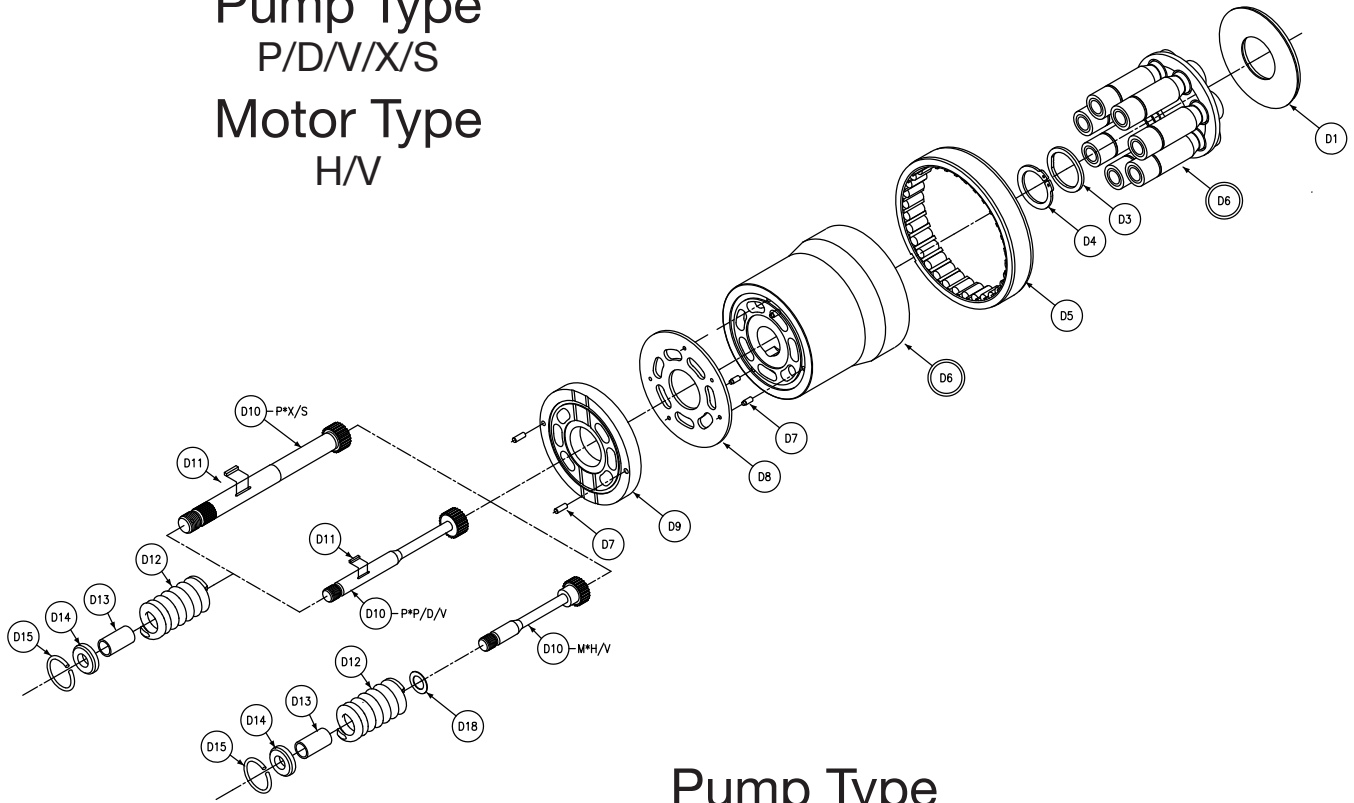
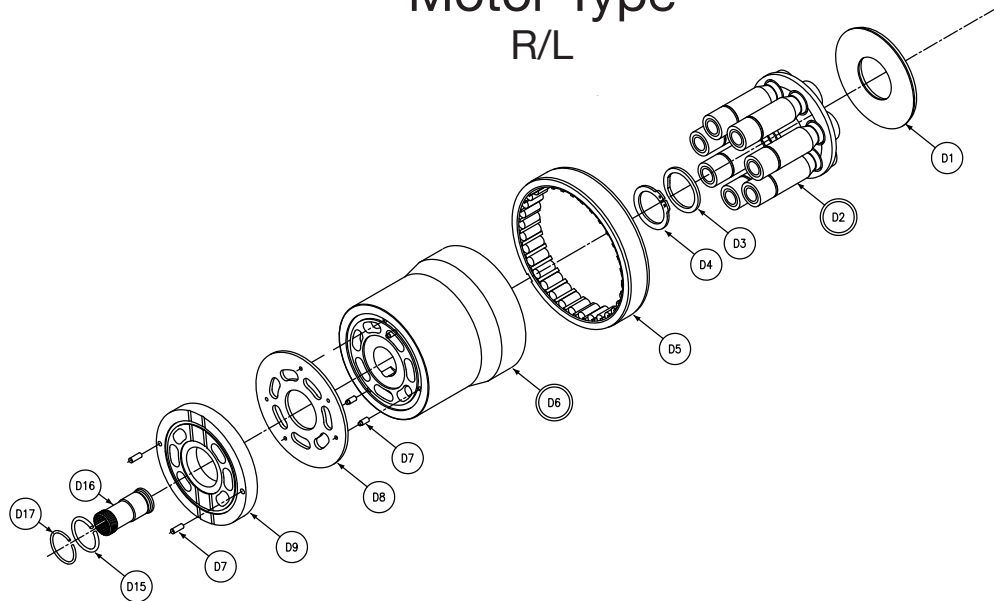


Pump Type  
P/D/N/X/S  
Motor Type  
H/V



Pump Type  
R/L  
Motor Type  
R/L



## Section View - D - Rotating Group Assembly

Section D 6/7/8 Rotating Group							
Balloon #	Displacement	Pump/Motor	Type	Rotation	Item #	Description	Qty
D1	**	P/M	P/D/V/X/S/L/R/H	**	033-71261-0	CREEP PLATE	1
D2	6	P	P/D/X/S/L/R	**	S13-43655-0	PISTON SHOE & RETAINER ASSEMBLY	1
		M	H/V	**			
	7	P/M	P/D/X/S/L/R/H	**	S13-42308-0		
		M	H/V	**			
	8	P/M	P/D/X/S/L/R/H	**	S21-11650-0		
		M	H/V	**			
	6	P	V	**	S13-45375-0		
	7	P	V	**	S13-47873-0		
	8	P	V	**	S21-11650-0		
	D3	**	P/M	P/D/V/X/S/L/R/H	**		
D4	**	P/M	P/D/V/X/S/L/R/H	**	033-54826-0	RET RING - .077 (1.96MM) THK BLACK	Select Fit One Only
	**	P/M	P/D/V/X/S/L/R/H	**	033-70490-0	RET RING - .079 (2.01MM) THK RED	
	**	P/M	P/D/V/X/S/L/R/H	**	033-70488-0	RET RING - .081 (2.06MM) THK GREEN	
	**	P/M	P/D/V/X/S/L/R/H	**	033-70484-0	RET RING - .083 (2.11MM) THK YELLOW	
	**	P/M	P/D/V/X/S/L/R/H	**	035-72176-0	RET RING - .085 (2.16MM) THK BLUE	
	**	P/M	P/D/V/X/S/L/R/H	**	035-72175-0	RET RING - .087 (2.21MM) THK WHITE	
	**	P/M	P/D/V/X/S/L/R/H	**	033-91232-0	RET RING - .075 (1.90MM) THK ORANGE	
D5	**	P/M	P/D/V/X/S/L/R/H	**	033-96167-0	BARREL BEARING	1
D6	6	P/M	P/D/V/X/S/L/R/H	**	S13-43657-0	CYLINDER BARREL	1
	7	P/M	P/D/V/X/S/L/R/H	**	S13-47511-0		
	8	P/M	P/D/V/X/S/L/R/H	**	S23-12718-0		
D7	**	P/M	P/D/V/X/S/L/R/H	**	033-49825-0	FACE PLATE PIN	5
D8	6	P/M	P/D/V/X/S/L/R/H	**	033-71530-0	FACE PLATE	1
	7/8	P/M	P/D/V/X/S/L/R/H	**	033-72532-0		

## Section View - D - Rotating Group Assembly

Section D 6/7/8 Rotating Group							
Balloon #	Displacement	Pump/Motor	Type	Rotation	Item #	Description	Qty
D9	6	P	P/D/X/S/L/R	CW	033-71526-0	PORT PLATE	1
	6	P	P/D/X/S/L/R	CCW	033-71525-0		
	7	P	P/D/X/S/L/R	CW	033-72811-0		
	7	P	P/D/X/S/L/R	CCW	033-53776-0		
	8	P	P/D/X/S/L/R	CW	033-91252-0		
	8	P	P/D/X/S/L/R	CCW	033-91553-0		
	6	P	V	CW	031-59368-0		
	6	P	V	CCW	031-59333-0		
	7	P	V	CW	031-54509-0		
	7	P	V	CCW	031-54508-0		
	8	P	V	CW	031-57379-0		
	8	P	V	CCW	031-57372-0		
	6	M	H/V/R/L	N	033-71531-0		
	7	M	H/V/R/L	N	033-53775-0		
	8	M	H/V/R/L	N	033-92267-0		
D10	**	P	P/D/V	**	033-53956-0	AUXILIARY SHAFT	1
	**	P	S/X	**	033-91050-0		
	**	M	H/V	**	033-70585-0		
D11	**	P/M	P/D/V/X/S/H	**	211-22034-0	SQUARE KEY	1
D12	**	P/M	P/D/V/X/S/H	**	033-70493-0	HOLDDOWN SPRING	1
D13	**	P/M	P/D/V/X/S/H	**	033-53944-0	HOLDDOWN STOP	1
D14	**	P/M	P/D/V/X/S/H	**	033-53945-0	SPRING RETAINER	1
D15	**	P/M	P/D/V/X/S/R/L/H	**	033-70494-0	RETAINING RING	1
D16	**	P/M	R/L	**	033-57397-0	HOLDDOWN SLEEVE	1
D17	**	P/M	R/L	**	033-57402-0	RETAINING RING	1
D18	**	P/M	H/V	**	350-10069-0	THRUST WASHER	1

Major Rotating Group Kits Composed of Items: D1,D2,D5,D6,D7,D8 and D9				
Displacement	Pump/ Motor	Type	Rotation	Part number
6	P	P/D/X/S/ R/L	CW	S23-17087-0
6	P	P/D/X/S/ R/L	CCW	S23-17088-0
6	P	V	CW	S23-17093-0
6	P	V	CCW	S23-17094-0
7	P	P/D/X/S/ R/L	CW	S23-17089-0
7	P	P/D/X/S/ R/L	CCW	S23-17090-0
7	P	V	CW	S23-17095-0
7	P	V	CCW	S23-17086-0
8	P	P/D/X/S/ R/L	CW	S23-17091-0
8	P	P/D/X/S/ R/L	CCW	S23-17092-0
8	P	V	CW	S23-17097-0
8	P	V	CCW	S23-17098-0
6	M	H/V/R/L	N	S23-17099-0
7	M	H/V/R/L	N	S23-17100-0
8	M	H/V/R/L	N	S23-19278-0

Barrel Holddown Kits Composed of Items: D10,D12,D13,D14 and D15 For P/D/V/X/S No Kit Available for R.L Versions			
Displacement	Pump/ Motor	Type	Part Number
6/7/8	P	P/D/V	S23-17246-0
6/7/8	P	X/S	S23-17247-0
6/7/8	M	H/V	S23-17248-0