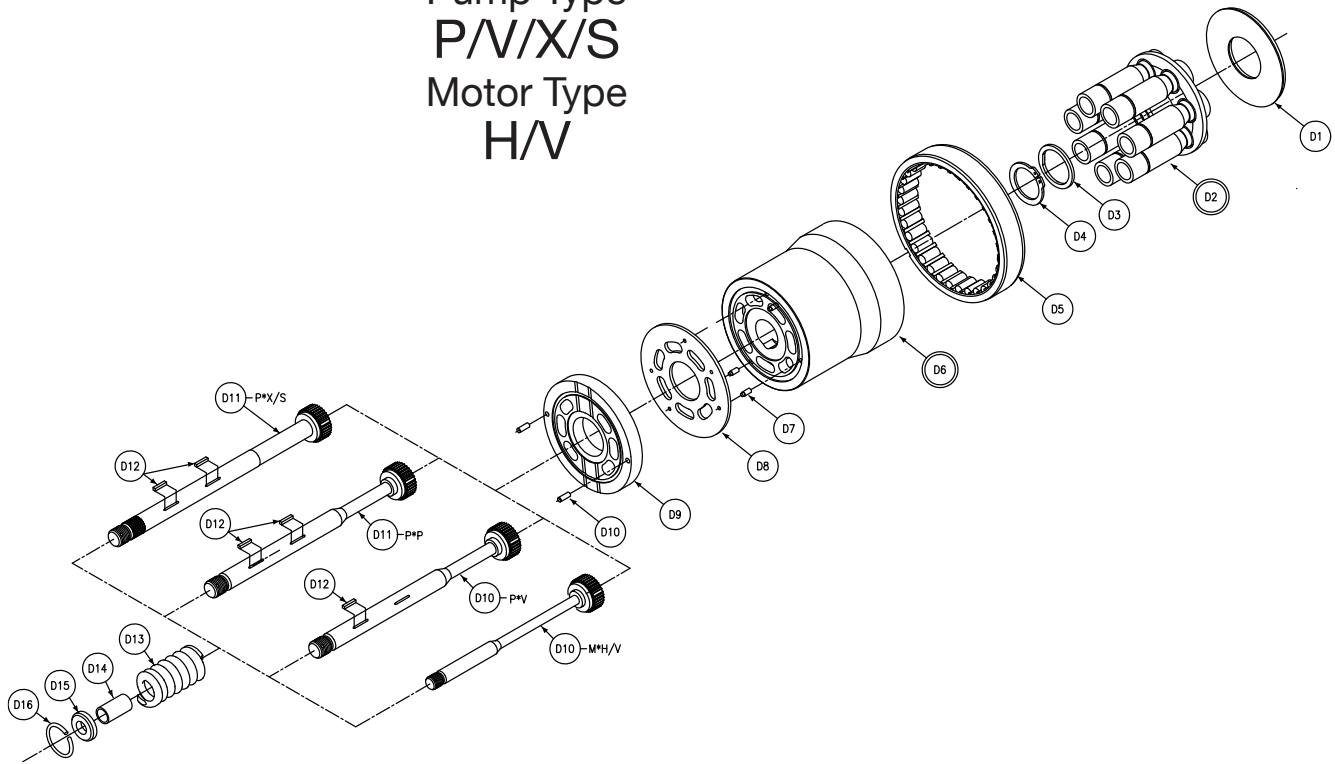
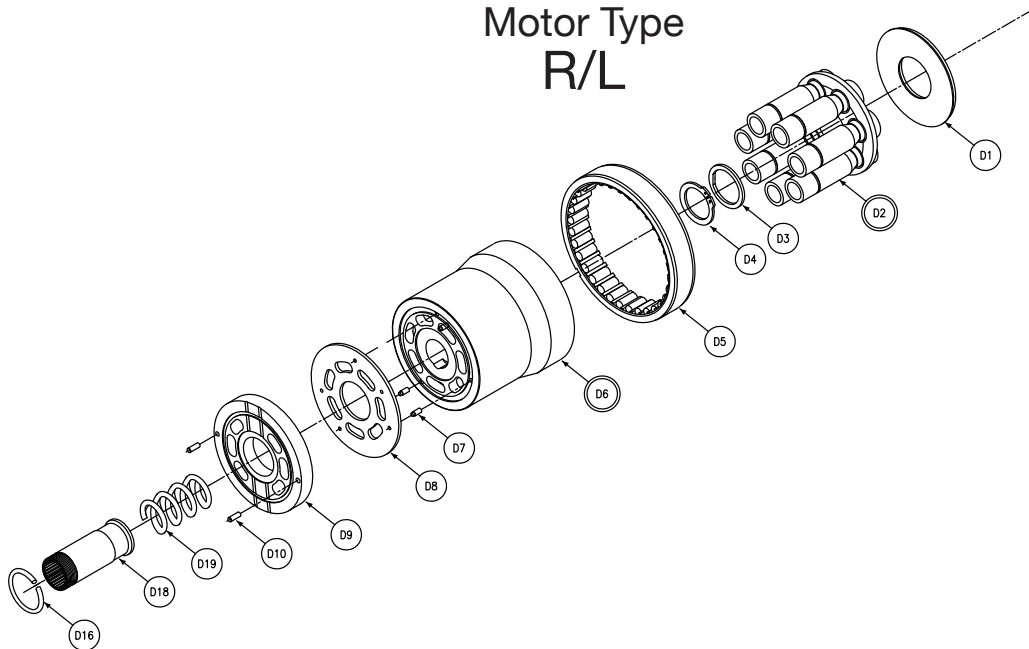


Pump Type
P/V/X/S
Motor Type
H/V



Pump Type
R/L
Motor Type
R/L



Section View - D - Rotating Group Assembly

| Section D 11/14 Rotating Group | | | | | | | |
|-----------------------------------|--------------|------------|---------------|----------|-------------|---------------------------------|---------------------|
| Balloon # | Displacement | Pump/Motor | Type | Rotation | Item # | Description | Qty |
| D1 | ** | P | P/V/X/S/L/R | ** | 033-71569-0 | CREEP PLATE | 1 |
| | ** | M | H/V/R/L | | | | |
| D2 | 11 | P | P/X/S/L/R | ** | S13-45544-0 | PISTON SHOE & RETAINER ASSEMBLY | 1 |
| | | M | H/V/R/L | ** | | | |
| | 14 | P | P/X/S/L/R/H | ** | S13-43970-0 | | |
| | | M | H/V/R/L | ** | | | |
| D3 | ** | P | P/V/X/S/L/R | ** | 033-91706-0 | THRUST WASHER | 1 |
| | ** | M | H/V/R/L | ** | | | |
| D4 | ** | P/M | P/V/X/S/L/R/H | ** | 033-71556-0 | RET RING - .109/.107 THK YELLOW | SELECT FIT ONE ONLY |
| | ** | P/M | P/V/X/S/L/R/H | ** | 033-71557-0 | RET RING - .107/.105 THK GREEN | |
| | ** | P/M | P/V/X/S/L/R/H | ** | 033-71558-0 | RET RING - .105/.103 THK RED | |
| | ** | P/M | P/V/X/S/L/R/H | ** | 033-71559-0 | RET RING - .103/.101 THK BLUE | |
| | ** | P/M | P/V/X/S/L/R/H | ** | 035-91231-0 | RET RING - .100/.098 THK WHITE | |
| D5 | ** | P/M | P/V/X/S/L/R/H | ** | 033-91190-0 | BARREL BEARING | 1 |
| D6 | 11 | P/M | P/V/X/S/L/R/H | ** | S13-45381-0 | CYLINDER BARREL | 1 |
| | 14 | P/M | P/V/X/S/L/R/H | ** | S13-43965-0 | | |
| D7 | ** | P/M | P/V/X/S/L/R/H | ** | 033-49825-0 | FACE PLATE PIN | 3 |
| D8 | 11 | P/M | P/V/X/S/L/R/H | ** | 033-71921-0 | FACE PLATE | 1 |
| | 14 | P/M | P/V/X/S/L/R/H | ** | 033-71575-0 | | |
| D9 | 11 | P | P/X/S/L/R | CW | 033-71915-0 | PORT PLATE | 1 |
| | 11 | P | P/X/S/L/R | CCW | 033-71914-0 | | |
| | 14 | P | P/X/S/L/R | CW | 033-71617-0 | | |
| | 14 | P | P/X/S/L/R | CCW | 033-71600-0 | | |
| | 11 | M | H/V/L/R | N | 033-71551-0 | | |
| | 14 | M | H/V/L/R | N | 033-71916-0 | | |
| | 11 | P | V | CW | 031-91195-0 | | |
| | 11 | P | V | CCW | 031-91224-0 | | |
| | 14 | P | V | CW | 031-91241-0 | | |
| | 14 | P | V | CCW | 031-91242-0 | | |
| D10 | ** | P/M | P/V/X/S/L/R/H | ** | 324-21910-0 | DOWEL PIN | 2 |

Continued on next page.



Section View - D - Rotating Group Assembly

| Section D 11/14 Rotating Group | | | | | | | |
|-----------------------------------|--------------|------------|-----------|----------|-------------|-----------------|-----|
| Balloon # | Displacement | Pump/Motor | Type | Rotation | Item # | Description | Qty |
| D11 | ** | P | P/V | ** | 033-71603-0 | AUXILIARY SHAFT | 1 |
| | ** | P | S/X | ** | 033-91053-0 | | |
| | ** | M | H/V | ** | 033-71573-0 | | |
| D12 | ** | P | V | ** | 211-22034-0 | SQUARE KEY | 1 |
| | ** | P | P/S/X | ** | | | 2 |
| | ** | M | H/V | ** | | | 2 |
| D13 | ** | P | P/V/X/S | ** | 033-71562-0 | HOLDDOWN SPRING | 1 |
| | ** | M | H/V | ** | | | |
| D14 | ** | P | P/V/X/S | ** | 033-71561-0 | BARREL STOP | 1 |
| | ** | M | H/V | ** | | | |
| D15 | ** | P/M | P/V/X/S/H | ** | 033-71560-0 | SPRING RETAINER | 1 |
| D16 | ** | P/M | P/V/X/S/H | ** | 033-71564-0 | RETAINING RING | 1 |
| D18 | ** | P/M | R/L | ** | 033-92687-0 | HOLDDOWN SLEEVE | 1 |
| D19 | ** | P/M | R/L | ** | 033-92686-0 | HOLDDOWN SPRING | 1 |

| Major Rotating Group Kits Composed of Items: D1, D2, D5, D6, D7, D8, D9 and D10 | | | | |
|---|------------|---------------|----------|-------------|
| Displacement | Pump/Motor | Type | Rotation | Part number |
| 11 | P | P/X/S/ R/L | CW | S23-17101-0 |
| 11 | P | P/X/S/ R/L | CCW | S23-17102-0 |
| 11 | P | V | CW | S23-17105-0 |
| 11 | P | V | CCW | S23-17106-0 |
| 14 | P | P/X/S/ R/L | CW | S23-17103-0 |
| 14 | P | P/X/S/ R/L | CCW | S23-17104-0 |
| 14 | P | V | CW | S23-17107-0 |
| 14 | P | V | CCW | S23-17108-0 |
| 11 | M | H/V/R/L | N | S23-17109-0 |
| 14 | M | H/V/R/L | N | S23-17110-0 |

| Barrel Holddown Kits Composed of Items: D11, D13, D14, D15 and D16 For P/V/X/S/H No Kit Available for R/L Versions | | | |
|---|------------|------|-------------|
| Displacement | Pump/Motor | Type | Part Number |
| 11/14 | P | P/V | S23-17250-0 |
| 11/14 | P | X/S | S23-17251-0 |
| 11/14 | M | H/V | S23-17252-0 |