

Section View - E - Pump Type - P & D - Port Block Assembly

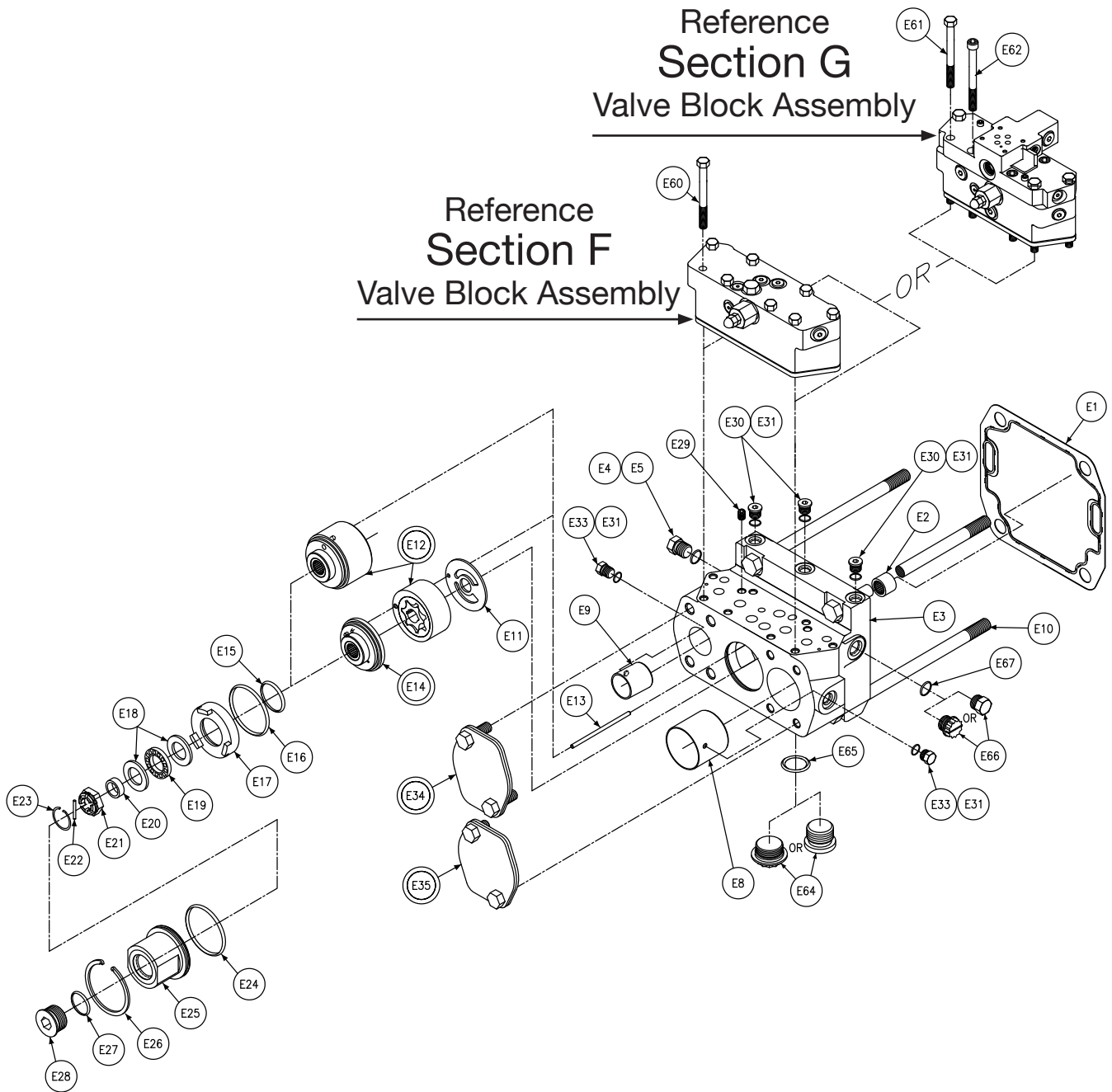
Section E P6/7/8 P & D Port Block							
Balloon #	Pump Type	Rotation	Seal Code	Internal Pump	Item #	Description	Qty
E1	P/D	**	**	0/X	033-91060-0	PORT BLOCK GASKET	
E2	P/D	**	**	0/X	230-82146-0	NEEDLE BEARING	1
E3	P/D	**	**	0/X	033-71296-0	PORT BLOCK	1
E4	P/D	**	**	0/X	488-35002-0	HEX HD PLUG	1
E5	P/D	**	1	0/X	691-00908-0	O RING	1
	P/D	**	4		694-00908-0		
	P/D	**	5		695-00908-0		
E6	P/D	**	**	0/X	348-10016-0	LOCKWASHER	2
E7	P/D	**	**	0/X	033-70908-0	SCREW SPECIAL	2
E8	P/D	**	**	0/X	033-70502-0	RING CHECK	2
E9	P/D	**	**	0/X	033-70489-0	CLAMP 6.0__	2
E10	P/D	**	**	0/X	306-40056-0	SCREW, HHC	4
E11	P/D	**	**	0	033-71492-0	SIDE PLATE	1
E12	P/D	**	**	0	S13-43334-0	ECCENTRIC RING & GEROTOR	1
	P/D	**	**	X	S13-47507-0	GEROTOR PLUG & BEARING	
E13	P/D	**	**	0/X	324-21225-0	DOWEL PIN	1
E14	P/D	CW	**	0	S13-46762-0	SIDE PLATE AND BEARING	1
	P/D	CCW	**		S13-46763-0		
E15	P/D	**	1	0/X	671-00129-0	O RING	1
	P/D	**	4		674-00129-0		
	P/D	**	5		675-00129-0		
E16	P/D	**	1	0/X	671-00144-0	O RING	1
	P/D	**	4		674-00144-0		
	P/D	**	5		675-00144-0		
E17	P/D	**	**	0/X	033-70531-0	PRESSURE PLATE	1
E18	P/D	**	**	0/X	350-10065-0	THRUST WASHER	2
E19	P/D	**	**	0/X	230-82131-0	THRUST BEARING	1
E20	P/D	**	**	0/X	033-71490-0	RING SEAL	1
E21	P/D	**	**	0/X	033-53922-0	HOLDDOWN NUT	1
E22	P/D	**	**	0/X	033-53921-0	RETAINING PIN	1
E23	P/D	**	**	0/X	033-53923-0	RETAING RING	1
E24	P/D	**	1	0/X	671-00147-0	O RING	1
	P/D	**	4		674-00147-0		
	P/D	**	5		675-00147-0		
E25	P/D	**	**	0/X	033-72100-0	AUXILIARY END COVER	1

Section View - E - Pump Type - P & D - Port Block Assembly

Section E P6/7/8 P & D Port Block							
Balloon #	Pump Type	Rotation	Seal Code	Internal Pump	Item #	Description	Qty
E26	P/D	**	**	0/X	356-65082-0	RETAINING RING	1
E27	P/D	**	1	0/X	691-00916-0	O RING	1
			4		694-00916-0		
			5		695-00916-0		
E28	P/D	**	**	0/X	488-35024-0	PLUG	1
E29	P/D	**	**	0/X	S13-40266-0	CHECK VALVE	2
E30	P/D	**	**	0/X	488-35041-0	PLUG	3
E31	P/D	**	1	0/X	691-00906-0	O RING	5
	P/D	**	4		694-00906-0		
	P/D	**	5		695-00906-0		
E33	P/D	**	**	0/X	488-35003-0	HEX HEAD PLUG	2
E34	P/D	**	**	0/X	S13-26133-0	SHIPPING COVER ASSY	2
E60	P/D	**	**	0/X	306-40242-0	HHCS 3/8-16UNC x 3-1/4	8
E61	P/D	**	**	0/X	306-40235-0	HHCS 3/8-16UNC x 5-1/2	4
E63	P/D	**	**	0/X	358-16360-0	SHCS 3/8-16 UNC x 4	4
E64	P/D	**	**	0	449-00019-0	SHIPPING PLUG	1
				X	488-35024-0	PLUG	
E65	P/D	**	1	0	691-00916-0	O RING	1
			4		694-00916-0		
			5		695-00916-0		
E66	P/D	**	**	X	449-00016-0	SHIPPING PLUG	1
				0	488-35002-0	PLUG	
E67	P/D	**	1	0	691-00908-0	O RING	1
			4		694-00908-0		
			5		695-00908-0		

Gerotor Assembly Kit				
Composed of Items: E11,E12 E13,E14,E15,E16,E18,E19 & E20 Less Item 12: S13-47507-0 N/A for R/L Versions	Pump Type	Rotation	Seal Code	Part Number
	P/V/D/S/X	CW	1	S13-47314-0
			4	S13-47314-4
			5	S13-47314-5
	PVDS/X	CCW	1	S13-47315-0
			4	S13-47315-4
			5	S13-47315-5





Section View - E - Pump Type - V - Port Block Assembly

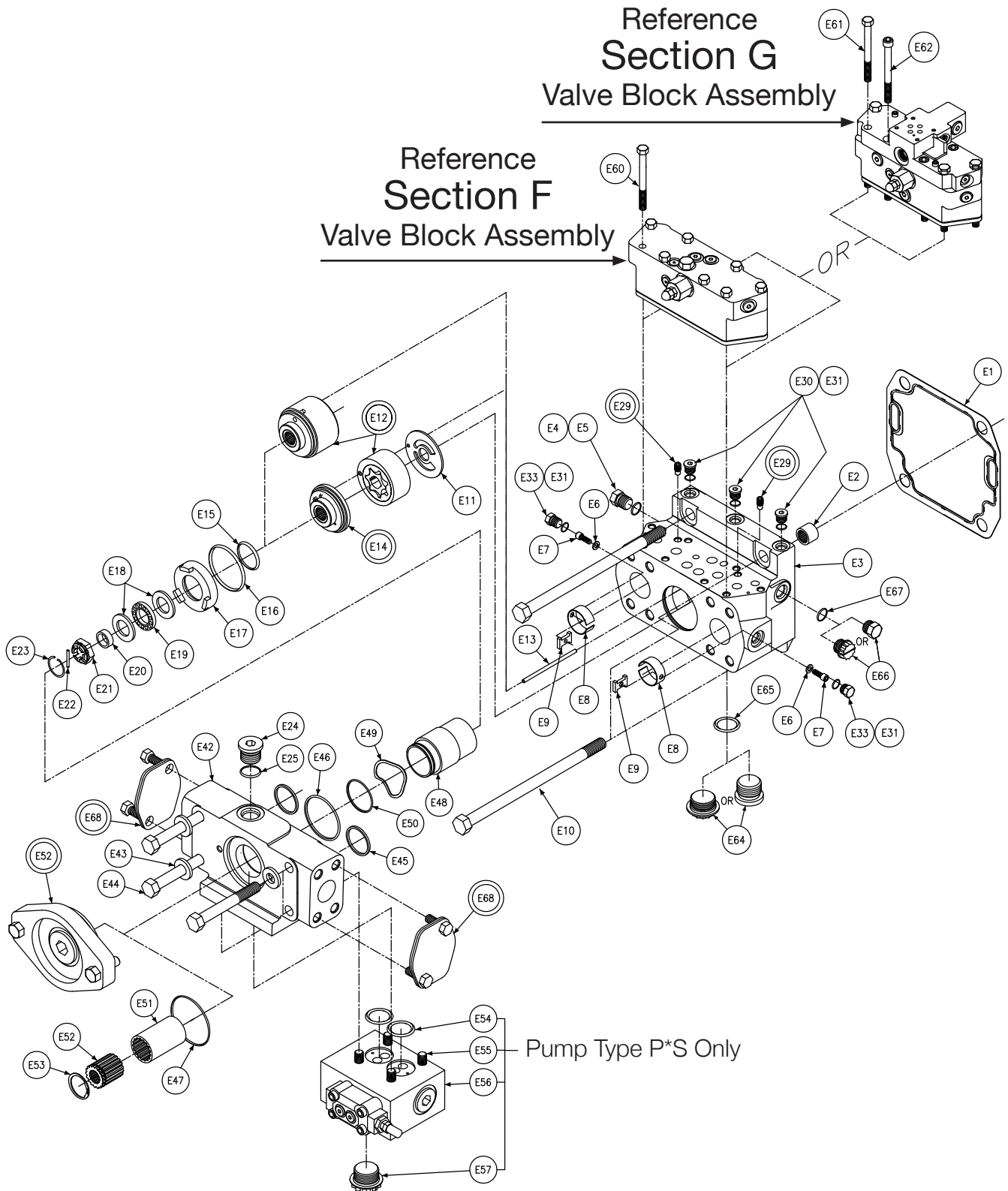
Section E P6/7/8 V Port Block							
Balloon #	Pump Type	Rotation	Seal Code	Internal Pump	Item #	Description	Qty
E1	V	**	**	0/X	033-91060-0	PORT BLOCK GASKET	
E2	V	**	**	0/X	230-82146-0	NEEDLE BEARING	1
E3	V	**	**	0/X	033-71911-0	PORT BLOCK	1
E4	V	**	**	0/X	488-35002-0	HEX HD PLUG	1
E5	V	**	1	0/X	691-00908-0	O RING	1
		**	4		694-00908-0		
		**	5		695-00908-0		
E8	V	**	**	0/X	033-91180-0	2** SOLID RING CHECK	1
E9	V	**	**	0/X	033-57893-0	1 1/2** SOLID RING CHECK	1
E10	V	**	**	0/X	306-40056-0	HHCS 5/8-11 UNC x 9	4
E11	V	**	**	0	033-71492-0	SIDE PLATE	1
E12	V	**	**	0	S13-43334-0	ECCENTRIC RING & GEROTOR	1
	V	**	**	X	S13-47507-0	GEROTOR PLUG & BEARING	
E13	V	**	**	0/X	324-21225-0	DOWEL PIN	1
E14	V	CW	**	0	S13-46762-0	SIDE PLATE AND BEARING	1
	V	CCW	**		S13-46763-0		
E15	V	**	1	0/X	671-00129-0	O RING	1
		**	4		674-00129-0		
		**	5		675-00129-0		
E16	V	**	1	0/X	671-00144-0	O RING	1
		**	4		674-00144-0		
		**	5		675-00144-0		
E17	V	**	**	0/X	033-70531-0	PRESSURE PLATE	1
E18	V	**	**	0/X	350-10065-0	THRUST WASHER	2
E19	V	**	**	0/X	230-82131-0	THRUST BEARING	1
E20	V	**	**	0/X	033-71490-0	RING SEAL	1
E21	V	**	**	0/X	033-53922-0	HOLDDOWN NUT	1
E22	V	**	**	0/X	033-53921-0	RETAINING PIN	1
E23	V	**	**	0/X	033-53923-0	RETAING RING	1
E24	V	**	1	0/X	671-00147-0	O RING	1
		**	4		674-00147-0		
		**	5		675-00147-0		
E25	V	**	**	0/X	033-72100-0	AUXILIARY END COVER	1
E26	V	**	**	0/X	356-65082-0	RETAINING RING	1



Section View - E - Pump Type - V - Port Block Assembly

Section E P6/7/8 V Port Block							
Balloon #	Pump Type	Rotation	Seal Code	Internal Pump	Item #	Description	Qty
E27	V	**	1	0/X	691-00916-0	O RING	1
	V	**	4		694-00916-0		
	V	**	5		695-00916-0		
E28	V	**	**	0/X	488-35024-0	PLUG	1
E29	V	**	**	0/X	353-25037-0	SOC. SET SCR. 3/8-24 UNF x 3/8	1
E30	V	**	**	0/X	488-35041-0	PLUG	3
E31	V	**	1	0/X	691-00906-0	O RING	5
		**	4		694-00906-0		
		**	5		695-00906-0		
E33	V	**	**	0/X	488-35003-0	HEX HEAD PLUG	2
E34	V	**	**	0/X	S13-26133-0	1 1/2" SHIPPING COVER ASSY	1
E35	V	**	**	0/X	S13-09338-0	2" SHIPPING COVER ASSY	1
E60	V	**	**	0/X	306-40242-0	HHCS 3/8-16UNC x 3-1/4	8
E61	V	**	**	0/X	306-40235-0	HHCS 3/8-16UNC x 5-1/2	4
E63	V	**	**	0/X	358-16360-0	SHCS 3/8-16 UNC x 4	4
E64	V	**	**	0	449-00019-0	SHIPPING PLUG	1
				X	488-35024-0	PLUG	
E65	V	**	1	0	691-00916-0	O RING	1
			4		694-00916-0		
			5		695-00916-0		
E66	V	**	**	0	449-00016-0	SHIPPING PLUG	1
				X	488-35002-0	PLUG	
E67	V	**	1	0	691-00908-0	O RING	1
			4		694-00908-0		
			5		695-00908-0		





Section View - E - Pump Type - S & X - Port Block Assembly

Section E P6/7/8 S & X Port Block								
Balloon #	Pump Type	Internal Pump	Rotation	Seal Code	Thru Drive	Item #	Description	Qty
E1	S/X	0/X	**	**	**	033-91060-0	PORT BLOCK GASKET	
E2	S/X	0/X	**	**	**	230-82146-0	NEEDLE BEARING	1
E3	S/X	0/X	**	**	**	033-71296-0	PORT BLOCK	1
E4	S/X	0/X	**	**	**	488-35002-0	HEX HD PLUG	1
E5	S/X	0/X	**	1	**	691-00908-0	O RING	1
				4	**	694-00908-0		
				5	**	695-00908-0		
E6	S/X	0/X	**	**	**	348-10016-0	LOCKWASHER	2
E7	S/X	0/X	**	**	**	033-70908-0	SCREW SPECIAL	2
E8	S/X	0/X	**	**	**	033-70502-0	RING CHECK	2
E9	S/X	0/X	**	**	**	033-70489-0	CLAMP 6.0__	2
E10	S/X	0/X	**	**	**	306-40056-0	SCREW, HHC	4
E11	S/X	0/X	**	**	**	033-71492-0	SIDE PLATE	1
E12	S/X	0	**	**	**	S13-43334-0	ECCENTRIC RING & GEROTOR	1
		X				S13-47507-0	GEROTOR PLUG & BEARING	
E13	S/X	0/X	**	**	**	324-21225-0	DOWEL PIN	1
E14	S/X	0	CW	**	**	S13-46762-0	SIDE PLATE AND BEARING	1
	S/X		CCW	**	**	S13-46763-0		
E15	S/X	0/X	**	1	**	671-00129-0	O RING	1
				4	**	674-00129-0		
				5	**	675-00129-0		
E16	S/X	0/X	**	1	**	671-00144-0	O RING	1
				4	**	674-00144-0		
				5	**	675-00144-0		
E17	S/X	0/X	**	**	**	033-70531-0	PRESSURE PLATE	1
E18	S/X	0/X	**	**	**	350-10081-0	THRUST WASHER	2
E19	S/X	0/X	**	**	**	230-82164-0	THRUST BEARING	1
E20	S/X	0/X	**	**	**	033-72101-0	RING SEAL	1
E22	S/X	0/X	**	**	**	033-53921-0	RETAINING PIN	1
E23	S/X	0/X	**	**	**	033-53923-0	RETAING RING	1
E24	S/X	0/X	**	**	**	488-35008-0	PLUG	1
E25	S/X	0/X	**	1	**	691-00912-0	O RING	1
				4		694-00912-0		
				5		605-00912-0		



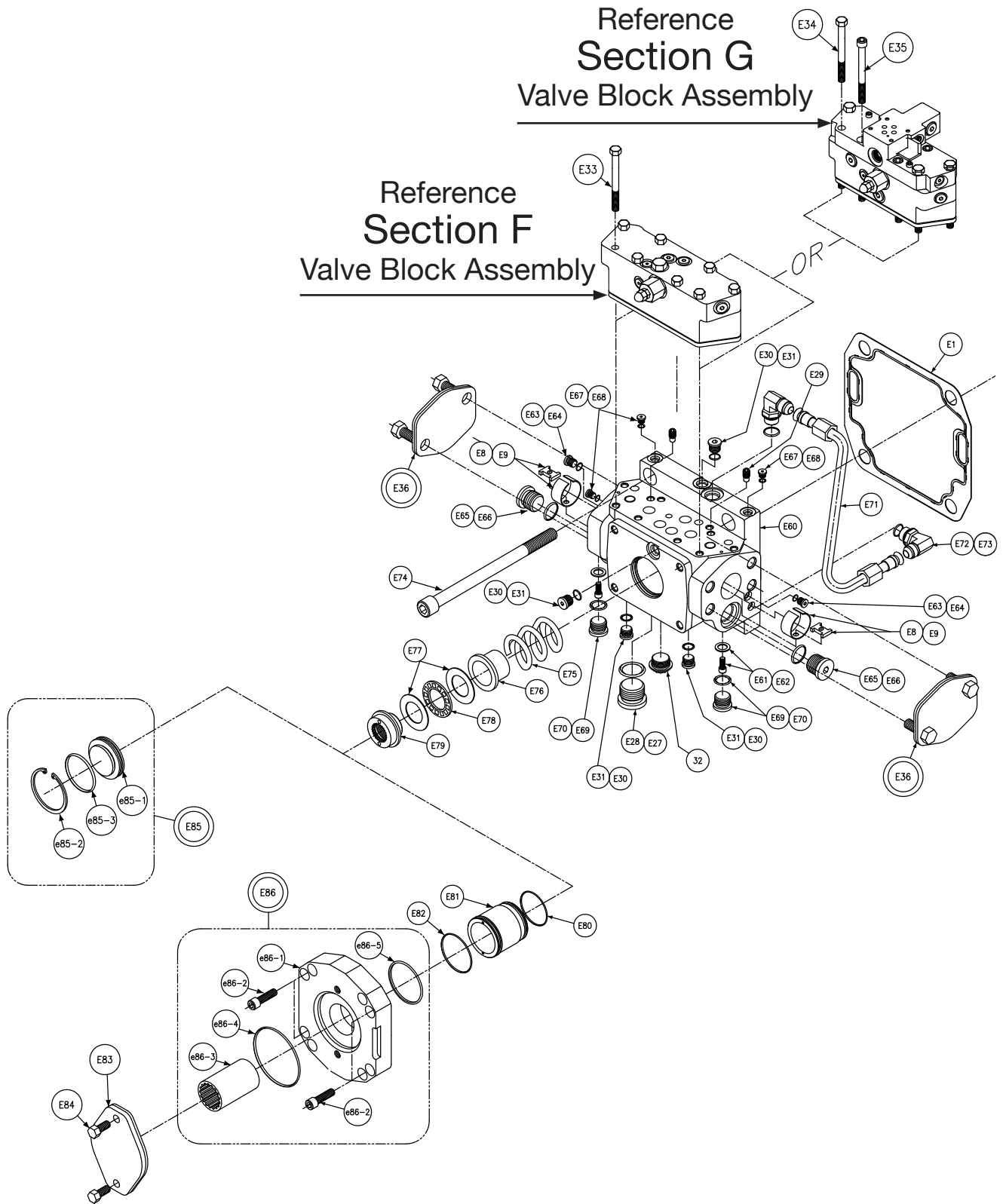
Section View - E - Pump Type - S & X - Port Block Assembly

Section E P6/7/8 S & X Port Block								
Balloon #	Pump Type	Internal Pump	Rotation	Seal Code	Thru Drive	Item #	Description	Qty
E29	S/X	0/X	**	**	**	S13-40266-0	CHECK VALVE	2
E30	S/X	0/X	**	**	**	488-35041-0	PLUG	3
E31	S/X	0/X	**	1	**	691-00906-0	O RING	5
				4	**	694-00906-0		
				5	**	695-00906-0		
E33	S/X	0/X	**	**	**	488-35003-0	HEX HEAD PLUG	2
E40	S/X	0/X	**	**	**	033-91051-0	INSERT	1
E41	S/X	0/X	**	**	**	033-91052-0	HOLDDOWN NUT	1
E42	S	0/X	**	**	A	033-91015-0	SAE-A RDR ADAPTER	1
					B/M	033-57967-0	SAE-B RDR ADAPTER	
					A	033-57958-0	SAE-A RDR ADAPTER	
					B/M	033-57957-0	SAE-B RDR ADAPTER	
E43	S/X	0/X	**	**	**	350-10136-0	WASHER	4
E44	S/X	0/X	**	**	**	306-40088-0	HEX HEAD CAP SCREW	4
E45	S/X	0/X	**	1	**	691-10131-0	O RING	2
				4	**	694-10131-0		
				5	**	695-10131-0		
E46	S/X	0/X	**	1	**	671-00147-0	O RING	1
				4	**	674-00147-0		
				5	**	675-00147-0		
E47	S/X	0/X	**	1	A/B	671-00155-0	O RING	1
				4		674-00155-0		
				5		675-00155-0		
E48	S/X	0/X	**	**	**	033-57966-0	REPLENISH ISOLATION TUBE	1
E49	S/X	0/X	**	**	**	225-92093-0	WAVE SPRING	1
E50	S/X	0/X	**	1	**	671-00033-0	O RING	1
				4	**	674-00033-0		
				5	**	675-00033-0		
E51	S/X	0/X	**	**	A/B	033-57963-0	COUPLING	1
E52	S/X	0/X	**	**	A	033-57965-0	SAE-A INSERT	1
				**	B	033-57964-0	SAE-B INSERT	
				**	M	S23-19371-0	BLANKING PLATE	
E53	S/X	0/X	**	**	A/B	356-65128-0	RETAINING RING	1



Section View - E - Pump Type - S & X - Port Block Assembly

Section E P6/7/8 S & X Port Block								
Balloon #	Pump Type	Internal Pump	Rotation	Seal Code	Thru Drive	Item #	Description	Qty
E54	S	0/X	**	1	**	691-10221-0	O RING	2
				4	**	694-10221-0		
				5	**	695-10221-0		
E55	S	0/X	**	**	**	306-40224-0	HEX HD CAP SCREW	4
E56	S	0/X	**	1	**	080030100003	HOT OIL SHUTTLE INT PILOT DRAIN	1
				5	**	S23-12007-5		
E57	S	0/X	**	**	**	449-00019-0	SHIPPING PLUG	1
E60	S/X	0/X	**	**	**	306-40242-0	HHCS 3/8-16UNC X 3-1/4	8
E61	S/X	0/X	**	**	**	306-40235-0	HHCS 3/8-16UNC X 5-1/2	4
E62	S/X	0/X	**	**	**	358-16360-0	SHCS 3/8-16 UNC X 4	4
E64	S/X	0	**	**	**	449-00019-0	SHIPPING PLUG	1
		X	**	**	**	488-35024-0	PLUG	
E65	S/X	0	**	1	**	691-00916-0	O RING	1
				4	**	694-00916-0		
				5	**	695-00916-0		
E66	S/X	0	**	**	**	449-00016-0	SHIPPING PLUG	1
		X	**	**	**	488-35002-0	PLUG	
E67	S/X	0	**	1	**	691-00908-0	O RING	1
				4	**	694-00908-0		
				5	**	695-00908-0		
E68	S/X	0/X	**	**	**	S13-26133-0	ASSEMBLY SHIPPING COVER	2



Section View - E - Pump Type - R - Port Block Assembly

M Operating Cover				
Balloon #	Seal Code	Item #	Description	Qty
E85	1	S23-17638-0	OPERATING COVER ASSEMBLY	1
	4	S23-17638-4		
	5	S23-17638-5		
e85-1	**	033-71059-0	COVER	1
e85-2	**	356-65083-0	RETAINING RING	1
e85-3	1	671-00138-0	O RING	1
	4	674-00138-0		
	5	675-00138-0		

SAE-A Adaptor				
Balloon #	Seal Code	Item #	Description	Qty
E86	1	S23-15868-0	KIT REAR ADAPTOR SAE-A	1
	4	S23-15868-4		
	5	S23-15868-5		
e86-1	**	033-92413-0	SAE-A ADAPTOR	1
e86-2	**	358-18180-0	SHCS 7/16-14 UNC X 1 1/4	4
e86-3	**	033-92413-0	SAE-A COUPLING	2
e86-4	1	671-00152-0	O RING	1
	4	674-00152-0		
	5	675-00152-0		
e86-5	1	671-00138-0	O RING	1
	4	674-00138-0		
	5	675-00138-0		

SAE-B Adaptor				
Balloon #	Seal Code	Item #	Description	Qty.
E86	1	S23-16884-0	KIT REAR ADAPTOR SAE-B	1
	4	S23-16884-4		
	5	S23-16884-5		
e86-1	**	033-57535-0	SAE-B ADAPTOR	1
e86-2	**	358-18200-0	SHCS 7/16-14 UNC X 1 1/2	4
e86-3	**	033-57714-0	SAE-B COUPLING	1
e86-4	1	671-00155-0	O RING	1
	4	674-00155-0		
	5	675-00155-0		
e86-5	1	671-00138-0	O RING	1
	4	674-00138-0		
	5	675-00138-0		

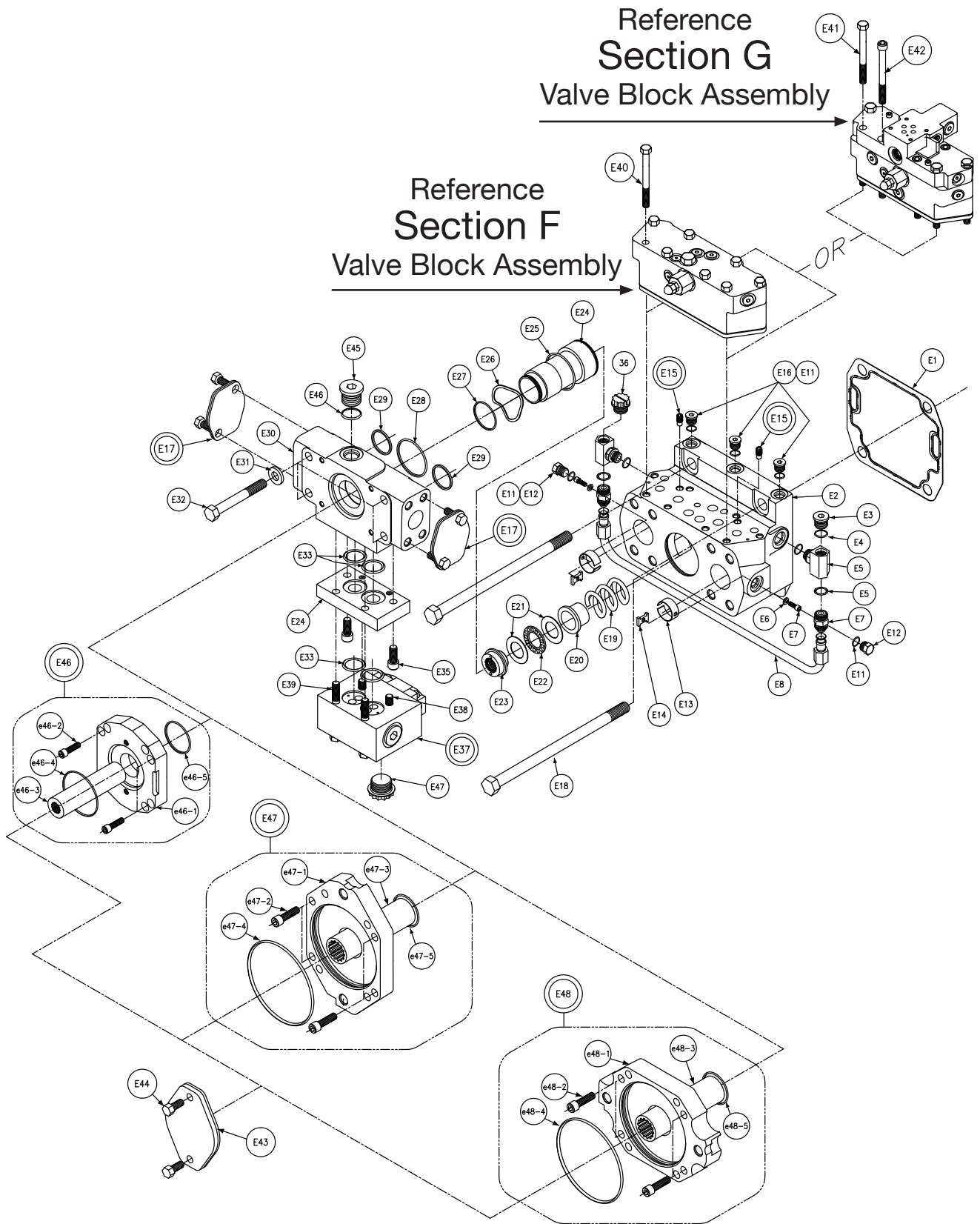
Section View - E - Pump Type - R - Port Block Assembly

SAE-C ADAPTOR				
Balloon #	Seal Code	Item #	Description	Qty
E86	1	S23-16885-0	KIT REAR ADAPTOR SAE-C	1
	4	S23-16885-4		
	5	S23-16885-5		
e86-1	**	033-57395-0	SAE-C ADAPTOR	1
e86-2	**	358-18200-0	SHCS 7/16-14 UNC X 1 1/2	2
e86-3	**	033-57398-0	SAE-C COUPLING	1
e86-4	1	671-00250-0	O RING	1
	4	674-00250-0		
	5	675-00250-0		
e86-5	1	671-00138-0	O RING	1
	4	674-00138-0		
	5	675-00138-0		

Section E P6/7/8 R Port Block						
Balloon #	Pump Type	Seal Code	External Drive	Item #	Description	Qty
E1	R	**	**	033-91061-0	GASKET PORT BLOCK	1
E8	R	**	**	033-70502-0	RING CHECK	2
E9	R	**	**	033-70489-0	CLAMP	2
E27	R	1	**	691-00916-0	O RING	1
	R	4	**	694-00916-0		
	R	5	**	695-00916-0		
E28	R	**	**	488-35024-0	PLUG	1
E29	R	**	**	S13-40266-0	CHECK VALVE	2
E30	R	**	**	488-35041-0	PLUG	4
E31	R	1	**	691-00906-0	O RING	4
		4	**	694-00906-0		
		5	**	695-00906-0		
E32	R	**	**	449-00016-0	SHIPPING PLUG	1
E33	R	**	**	306-40242-0	HHCS 3/8-16UNC X 3-1/4	8
E34	R	**	**	306-40235-0	HHCS 3/8-16UNC X 5-1/2	4
E35	R	**	**	358-16360-0	SHCS 3/8-16 UNC X 4	4
E36	R	**	**	S13-26133-0	ASSY SHIPPING COVER 1 1/2	2
E60	R	**	**	033-57696-0	PORT BLOCK	1
E61	R	**	**	359-00001-0	SHCS 1/4-28 UNF X 7/8	2
E62	R	**	**	033-57450-0	WASHER GASKET	2
E63	R	**	**	488-35046-0	PLUG	2

Section View - E - Pump Type - R - Port Block Assembly

Section E P6/7/8 R Port Block						
Balloon #	Pump Type	Seal Code	External Drive	Item #	Description	Qty
E64	R	1	**	691-00902-0	O RING	2
		4	**	694-00902-0		
		5	**	695-00902-0		
E65	R	**	**	033-57408-0	PLUG	2
E66	R	1	**	691-00912-0	O RING	2
		4	**	694-00912-0		
		5	**	695-00912-0		
E67	R	**	**	488-35001-0	PLUG	3
E68	R	1	**	691-00904-0	O RING	3
		4	**	694-00904-0		
		5	**	695-00904-0		
E69	R	**	**	488-35055-0	PLUG	2
E70	R	1	**	691-00910-0	O RING	2
		4	**	694-00910-0		
		5	**	695-00910-0		
E71	R	**	**	S23-17195-0	TUBE ASSEMBLY	1
E72	R	**	**	496-15001-0	ELBOW	2
E73	R	1	**	691-00908-0	O RING	2
		4	**	694-00908-0		
		5	**	695-00908-0		
E74	R	**	**	358-24540-0	SHCS 5/8-11 UNRC X 8-1/2	4
E75	R	**	**	033-57400-0	HOLDDOWN SPRING	1
E76	R	**	**	033-57401-0	HOLDDOWN STOP	1
E77	R	**	**	350-10114-0	WASHER	2
E78	R	**	**	230-82195-0	THRUST BEARING	1
E79	R	**	**	033-57396-0	HOLDDOWN NUT	1
E80	R	1	A/B/C	671-00136-0	O RING	1
		4		674-00136-0		
		5		675-00136-0		
E81	R	**	A/B/C	033-57407-0	REPLEN ISOLATION TUBE	1
E82	R	1	A/B/C	671-00138-0	O RING	1
		4		674-00138-0		
		5		675-00138-0		
E83	R	**	A	034-59555-0	SHIPPING COVER SAE-A 2 BOLT	1
			B	034-59556-0	SHIPPING COVER SAE-B 2 BOLT	
			C	034-59557-0	SHIPPING COVER SAE-C 2 BOLT	
E84	R	**	A	306-16120-0	HHCS 3/8-16UNC X 3/4	2
			B	306-20120-0	HHCS 1/2-13UNC X 3/4	2
			C	306-24160-0	HHCS 5/8-11 UNC X 1	2



Section View - E - Pump Type - L - Port Block Assembly

SAE-A ADAPTOR KIT (Horizontal/Vertical Mtg.)				
Balloon #	Seal Code	Item #	Description	Qty
E46	1	S23-17223-0	KIT REAR ADAPTOR SAE-A	1
	4	S23-17223-4		
	5	S23-17223-5		
e46-1	**	033-92412-0	SAE-A ADAPTOR	1
e46-2	**	358-18180-0	SHCS 7/16-14 UNC X 1 1/4	4
e46-3	**	033-93454-0	SAE-A COUPLING	2
e46-4	1	671-00152-0	O RING	1
	4	674-00152-0		
	5	675-00152-0		
e46-5	1	671-00138-0	O RING	1
	4	674-00138-0		
	5	675-00138-0		

SAE-B ADAPTOR KIT (Horizontal/Vertical Mtg.)				
Balloon #	Seal Code	Item #	Description	Qty
E46	1	S23-18305-0	KIT REAR ADAPTOR SAE-B	1
	4	S23-18305-4		
	5	S23-18305-5		
e46-1	**	033-57535-0	SAE-B ADAPTOR	1
e46-2	**	358-18200-0	SHCS 7/16-14 UNC X 1 1/2	4
e46-3	**	033-94248-0	SAE-B COUPLING	1
e46-4	1	671-00155-0	O RING	1
	4	674-00155-0		
	5	675-00155-0		
e46-5	1	671-00138-0	O RING	1
	4	674-00138-0		
	5	675-00138-0		

Section View - E - Pump Type - L - Port Block Assembly

SAE-C ADAPTOR KIT (Vertical Mtg.)				
Balloon #	Seal Code	Item #	Description	Qty
E47	1	S23-17224-0	KIT REAR ADAPTOR SAE-C	1
	4	S23-17224-4		
	5	S23-17224-5		
e47-1	**	033-57395-0	SAE-C ADAPTOR	1
e47-2	**	358-18200-0	SHCS 7/16-14 UNC X 1 1/2	2
e47-3	**	S23-18306-0	SAE-C COUPLING	1
e47-4	1	671-00250-0	O RING	1
	4	674-00250-0		
	5	675-00250-0		
e47-5	1	671-00138-0	O RING	1
	4	674-00138-0		
	5	675-00138-0		

SAE-C ADAPTOR KIT (Horizontal Mtg.)				
Balloon #	Seal Code	Item #	Description	Qty
E48	1	S23-19632-0	KIT REAR ADAPTOR SAE-C	1
	4	S23-19632-4		
	5	S23-19632-5		
e48-1	**	033-95839-0	SAE-C ADAPTOR	1
e48-2	**	358-18200-0	SHCS 7/16-14 UNC x 1 1/2	2
e48-3	**	S23-18306-0	SAE-C COUPLING	1
e48-4	1	671-00250-0	O RING	1
	4	674-00250-0		
	5	675-00250-0		
e48-5	1	671-00138-0	O RING	1
	4	674-00138-0		
	5	675-00138-0		

Section View - E - Pump Type - L - Port Block Assembly

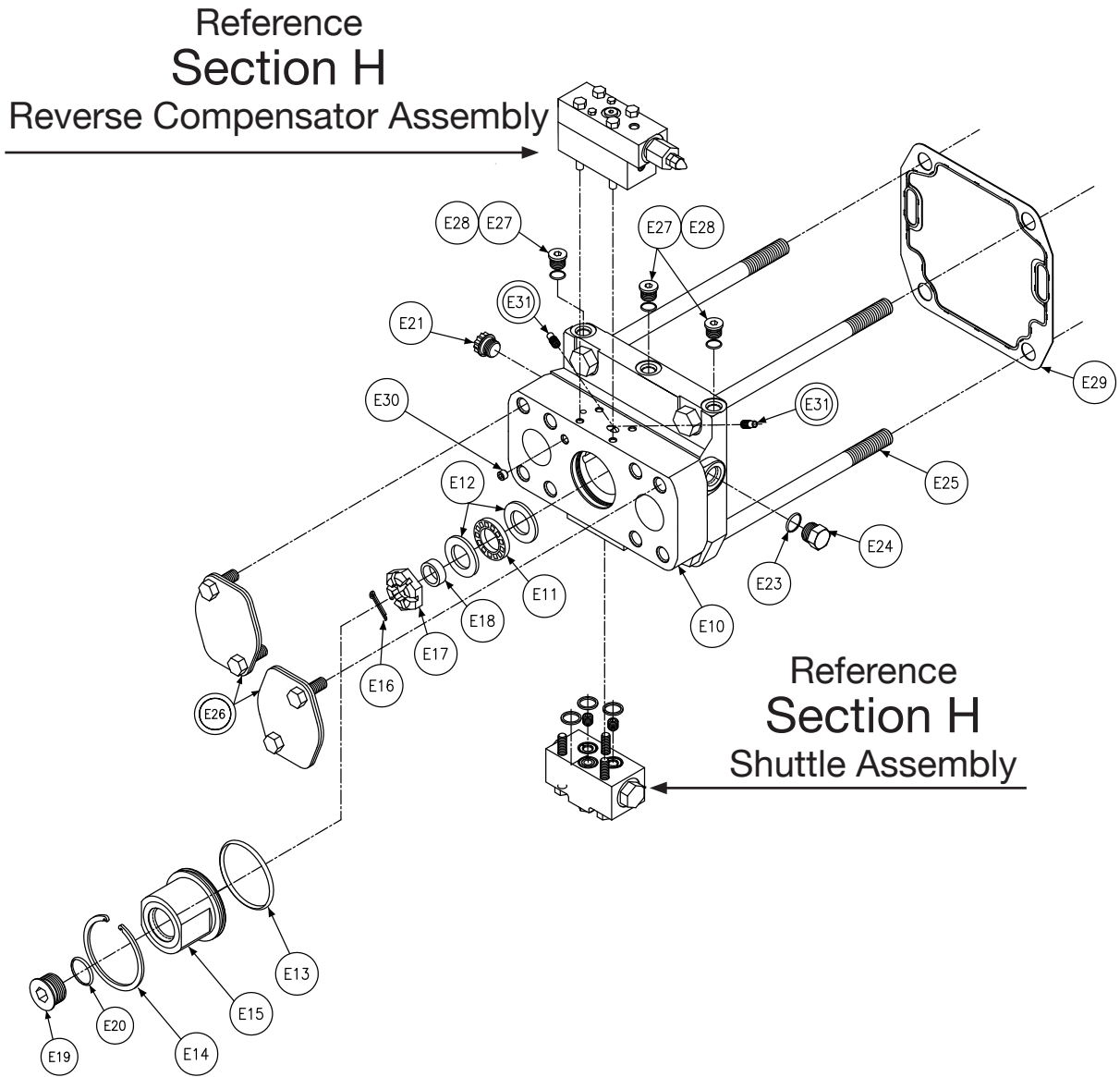
Section E P6/7/8 L Port Block						
Balloon #	Pump Type	Seal Code	External Drive	Item #	Description	Qty
E1	L	**	**	033-91060-0	GASKET PORT BLOCK	1
E2	L	**	**	033-92951-0	PORT BLOCK	1
E3	L	**	**	488-35055-0	PLUG	2
E4	L	1	**	691-00910-0	O RING	2
		4	**	694-00910-0		
		5	**	695-00910-0		
E5	L	**	**	492-15445-0	BRANCH TEE	2
E6	L	1	**	691-00908-0	O RING	4
		4	**	694-00908-0		
		5	**	695-00908-0		
E7	L	**	**	493-15015-0	CONNECTOR	2
E8	L	**	**	S23-16518-0	CROSSOVER TUBE	2
E9	L	**	**	348-10016-0	LOCK WASHER	2
E10	L	**	**	033-70908-0	SCREW	2
E11	L	1	**	691-00906-0	O RING	5
		4	**	694-00906-0		
		5	**	695-00906-0		
E12	L	**	**	488-35003-0	HEX HEAD PLUG	2
E13	L	**	**	033-70502-0	RING CHECK	2
E14	L	**	**	033-70489-0	CLAMP	2
E15	L	**	**	S13-40266-0	CHECK VALVE	2
E16	L	**	**	488-35041-0	PLUG	4
E17	L	**	**	S13-26133-0	ASSY SHIPPING COVER	2
E18	L		**	306-40056-0	HHCS 5/8-11 UNC X 9	4
E19	L	**	**	033-57400-0	HOLDDOWN SPRING	1
E20	L	**	**	033-57401-0	HOLDDOWN STOP	1
E21	L	**	**	350-10114-0	WASHER	2
E22	L	**	**	230-82195-0	THRUST BEARING	1
E23	L	**	**	033-57396-0	HOLDDOWN NUT	1
E24	L	1	**	671-00138-0	O RING	1
		4		674-00138-0		
		5		675-00138-0		
E25	L	**	**	033-57407-0	REPLEN ISOLATION TUBE	1
E26	L	**	**	225-92093-0	WAVE SPRING	1
E27	L	1	**	671-00033-0	O RING	1
		4	**	674-00033-0		
		5	**	675-00033-0		

Section View - E - Pump Type - L - Port Block Assembly

Section E P6/7/8 L Port Block						
Balloon #	Pump Type	Seal Code	External Drive	Item #	Description	Qty
E28	L	1	**	671-00147-0	O RING	1
		4	**	674-00147-0		
		5	**	675-00147-0		
E29	L	1	**	691-10131-0	SQUARE GASKET	2
		4	**	694-10131-0		
		5	**	695-10131-0		
E30	L	**	**	033-92952-0	ADAPTER	1
E31	L	**	**	350-10136-0	WASHER	4
E32	L	**	**	306-40088-0	HHCS 5/8-11 UNC X 4 1/4	4
E33	L	1	**	691-10221-0	SQUARE GASKET	4
		4	**	694-10221-0		
		5	**	695-10221-0		
E34	L	**	**	033-92954-0	SHUTTLE SPACER	1
E35	L	**	**	358-20160-0	SHCS 1/2-13 UNC X 1	2
E36	L	**	**	449-00016-0	SHIPPING PLUG	1
E37	L	1	**	080030100003	HOT OIL SHUTTLE INT PILOT DRAIN	1
		5	**	S23-12007-5		
E38	L	**	**	306-40224-0	HHCS 1/2-13 UNC X 3 1/2	2
E39	L	**	**	306-40175-0	HHCS 1/2-13 UNC X 4 1/2	2
E40	L	**	**	306-40242-0	HHCS 3/8-16UNC X 3-1/4	8
E41	L	**	**	306-40235-0	HHCS 3/8-16UNC X 5-1/2	4
E42	L	**	**	358-16360-0	SHCS 3/8-16 UNC X 4	4
E43	L	**	A	034-59555-0	*SHIPPING COVER SAE-A 2 BOLT	1
			B	034-59556-0	*SHIPPING COVER SAE B 2 BOLT	
			C	034-59557-0	*SHIPPING COVER SAE C 2 BOLT	
E44	L	**	A	306-16120-0	*HHCS 3/8-16UNC X 3/4	2
			B	306-20120-0	*HHCS 1/2-13UNC X 3/4	2
			C	306-24160-0	*HHCS 5/8-11 UNC X 1	2
E45	L	**	**	488-35008-0	PLUG	1
E46	L	1	**	691-00912-0	O RING	1
		4		694-00912-0		
		5		695-00912-0		
E47	L	**	**	449-00019-0	SHIPPING PLUG	1

Note: Descriptions marked * are also contained in mounting kits.

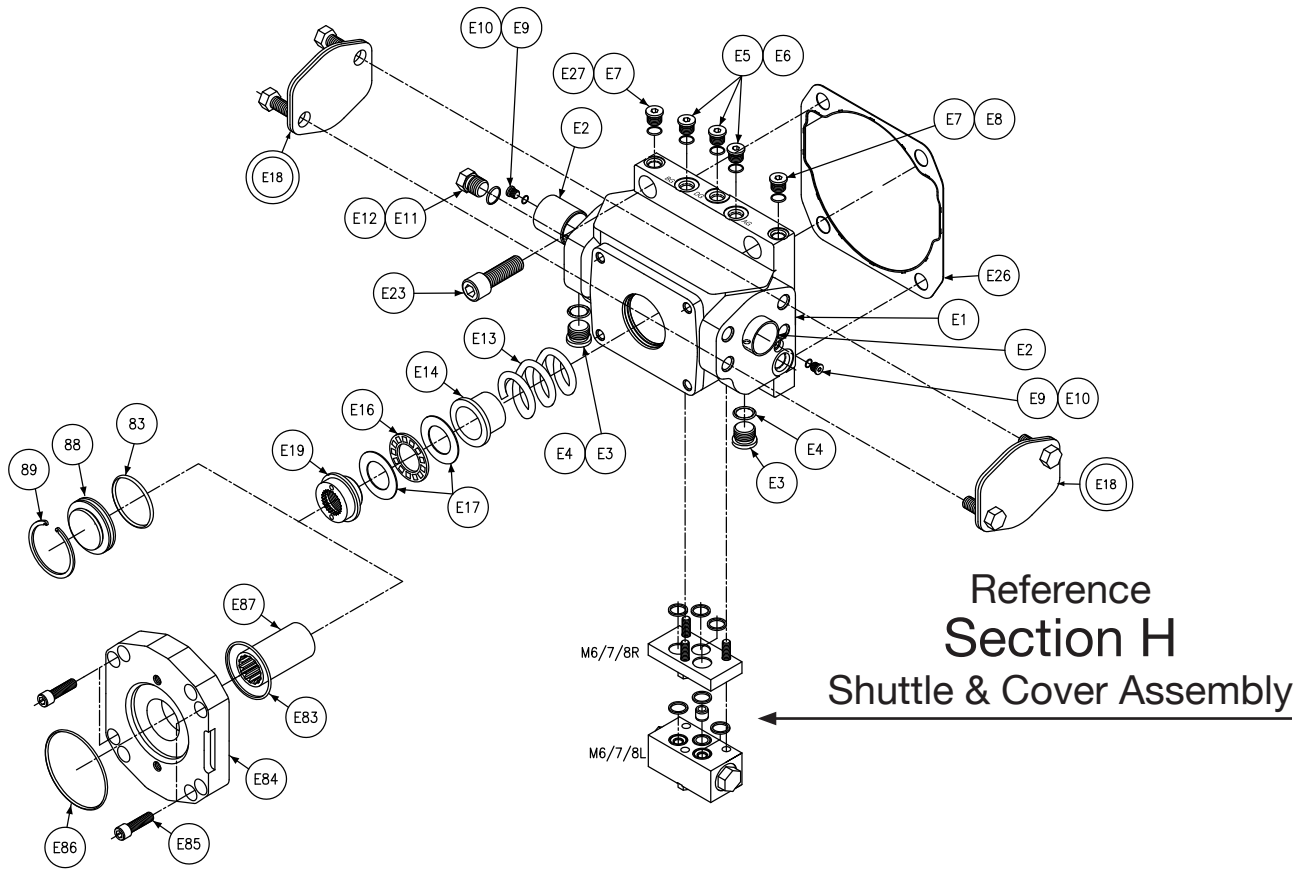




Section View - E - Motor Type - H & V - Port Block Assembly

Section E M6/7/8 H & V Port Block						
Balloon #	Motor Type	Secondary Control	Seal Code	Item #	Description	Qty
E10	H/V	0/6/7/8/U/V/W/X/Y/Z	**	033-71297-0	PORT BLOCK	1
	H/V	3/5	**	033-91105-0	REV COMP PORT BLK	
E11	H/V	0/3/5/6/7/8/U/V/W/X/Y/Z	**	230-82131-0	THRUST BEARING	1
E12	H/V	0/3/5/6/7/8/U/V/W/X/Y/Z	**	350-10065-0	THRUST WASHER	2
E13	H/V	0/3/5/6/7/8/U/V/W/X/Y/Z	1	671-00138-0	O RING	1
			4	674-00138-0		
			5	675-00138-0		
E14	H/V	0/3/5/6/7/8/U/V/W/X/Y/Z	**	356-65095-0	SNAP RING	1
E15	H/V	0/3/5/6/7/8/U/V/W/X/Y/Z	**	033-70537-0	END COVER	1
E16	H/V	0/3/5/6/7/8/U/V/W/X/Y/Z	**	322-03324-0	COTTER PIN	1
E17	H/V	0/3/5/6/7/8/U/V/W/X/Y/Z	**	033-53922-0	NUT	1
E18	H/V	0/3/5/6/7/8/U/V/W/X/Y/Z	**	033-70510-0	RING SEAL	1
E19	H/V	0/3/5/6/7/8/U/V/W/X/Y/Z	**	488-35014-0	PLUG	1
E20	H/V	0/3/5/6/7/8/U/V/W/X/Y/Z	1	691-00912-0	O RING	1
			4	674-00912-0		
			5	695-00912-0		
E21	H/V	0/3/5/6/7/8/U/V/W/X/Y/Z	**	449-00016-0	SHIPPING PLUG	1
E23	H/V	0/3/5/6/7/8/U/V/W/X/Y/Z	1	691-00908-0	O RING	1
			4	674-00908-0		
			5	695-00908-0		
E24	H/V	0/3/5/6/7/8/U/V/W/X/Y/Z	**	488-35002-0	PLUG	1
E25	H/V	0/3/5/6/7/8/U/V/W/X/Y/Z	**	306-40056-0	SCREW	4
E26	H/V	0/3/5/6/7/8/U/V/W/X/Y/Z	**	S13-26133-0	ASSY SHIPPING COVER	2
E27	H/V	0/3/5/6/7/8/U/V/W/X/Y/Z	**	488-35041-0		3
E28	H/V	0/3/5/6/7/8/U/V/W/X/Y/Z	1	691-00906-0	O RING	3
			4	674-00906-0		
			5	695-00906-0		
E29	H/V	0/3/5/6/7/8/U/V/W/X/Y/Z	**	033-91060-0	GASKET	1
E30	H/V	3/5	**	431-90204-0	PLUG	1
E31	H/V	3/5	**	S13-40266-0	CHECK VALVE	2





Section View - E - Motor Type - R & L - Port Block Assembly

Solid Cover Assembly				
Balloon	Seal Code	Part Number	Qty	Description
E83	1	671-00138-0	1	O RING
	4	674-00138-0		
	5	675-00138-0		
E88	**	033-71059-0	1	END COVER
E89	**	356-65083-0	1	RETAINING RING
	1	S23-17638-0	1	KIT CONTAIN ALL ABOVE SEAL CODE 1
	4	S23-17638-4	1	KIT CONTAIN ALL ABOVE SEAL CODE 4
	5	S23-17638-5	1	KIT CONTAIN ALL ABOVE SEAL CODE 5

SAE-A Adapter Assembly				
Balloon	Seal Code	Part Number	Qty	Description
E83	1	671-00138-0	1	O RING
	4	674-00138-0		
	5	675-00138-0		
E84	**	033-92412-0	1	ADAPTER PLATE
E85	**	358-18180-0	4	SCREW, SHC
E86	1	671-00152-0	1	O RING
	4	674-00152-0		
	5	675-00152-0		
E87	**	033-92413-0	1	SAE-A COUPLING
	1	S23-15868-0	1	KIT CONTAIN ALL ABOVE SEAL CODE 1
	4	S23-15868-4	1	KIT CONTAIN ALL ABOVE SEAL CODE 4
	5	S23-15868-5	1	KIT CONTAIN ALL ABOVE SEAL CODE 5

Section View - E - Motor Type - R & L - Port Block Assembly

SAE-B Adapter Assembly				
Balloon	Seal Code	Part Number	Qty	Description
E83	1	671-00138-0	1	O RING
	4	674-00138-0		
	5	675-00138-0		
E84	**	033-57535-0	1	ADAPTER PLATE
E85	**	358-18200-0	4	SCREW, SHC
E86	1	671-00155-0	1	O RING
	4	674-00155-0		
	5	675-00155-0		
E87	**	033-57714-0	1	SAE-B COUPLING
	1	S23-16884-0	1	KIT CONTAIN ALL ABOVE SEAL CODE 1
	4	S23-16884-4	1	KIT CONTAIN ALL ABOVE SEAL CODE 4
	5	S23-16884-5	1	KIT CONTAIN ALL ABOVE SEAL CODE 5

SAE-C Adapter Assembly				
Balloon	Seal Code	Part Number	Qty	Description
E83	1	671-00138-0	1	O RING
	4	674-00138-0		
	5	675-00138-0		
E84	**	033-57395-0	1	ADAPTER PLATE
E85	**	358-18200-0	4	SCREW, SHC
E86	1	671-00250-0	1	O RING
	4	674-00250-0		
	5	675-00250-0		
E87	**	033-57398-0	1	SAE-C COUPLING
	1	S23-16885-0	1	KIT CONTAIN ALL ABOVE SEAL CODE 1
	4	S23-16885-4	1	KIT CONTAIN ALL ABOVE SEAL CODE 4
	5	S23-16885-5	1	KIT CONTAIN ALL ABOVE SEAL CODE 5

Section View - E - Motor Type - R & L - Port Block Assembly

Section E M6/7/8 R & L Port Block					
Balloon #	Motor Type	Seal Code	Item #	Description	Qty
E1	R/L	**	033-93706-0	PORT BLOCK	1
E2	R/L	**	033-57893-0	SLEEVE SOLID	2
E3	R/L	**	488-35055-0	PLUG	2
E4	R/L	1	691-00910-0	O RING	2
	R/L	4	674-00910-0		
	R/L	5	695-00910-0		
E5	R/L	**	488-35041-0	PLUG	3
E6	R/L	1	691-00906-0	O RING	3
	R/L	4	674-00906-0		
	R/L	5	695-00906-0		
E7	R/L	**	488-35001-0	PLUG	2
E8	R/L	1	691-00904-0	O RING	2
	R/L	4	674-00904-0		
	R/L	5	695-00904-0		
E9	R/L	**	488-35046-0	PLUG	2
E10	R/L	1	691-00902-0	O RING	2
	R/L	4	674-00902-0		
	R/L	5	695-00902-0		
E11	R/L	**	488-35002-0	PLUG	1
E12	R/L	1	691-00908-0	O RING	1
	R/L	4	674-00908-0		
	R/L	5	695-00908-0		
E13	R/L	**	033-57400-0	HOLDDOWN SPRING	1
E14	R/L	**	033-57401-0	STOP	1
E16	R/L	**	230-82195-0	BEARING	1
E17	R/L	**	350-10114-0	WASHER	2
E18	R/L	**	S13-26133-0	ASSEMBLY SHIPPING COVER	2
E19	R/L	**	033-57396-0	HOLDDOWN NUT	1
E23	R/L	**	358-24540-0	SCREW	4
E26	R/L	**	033-91061-0	GASKET	1