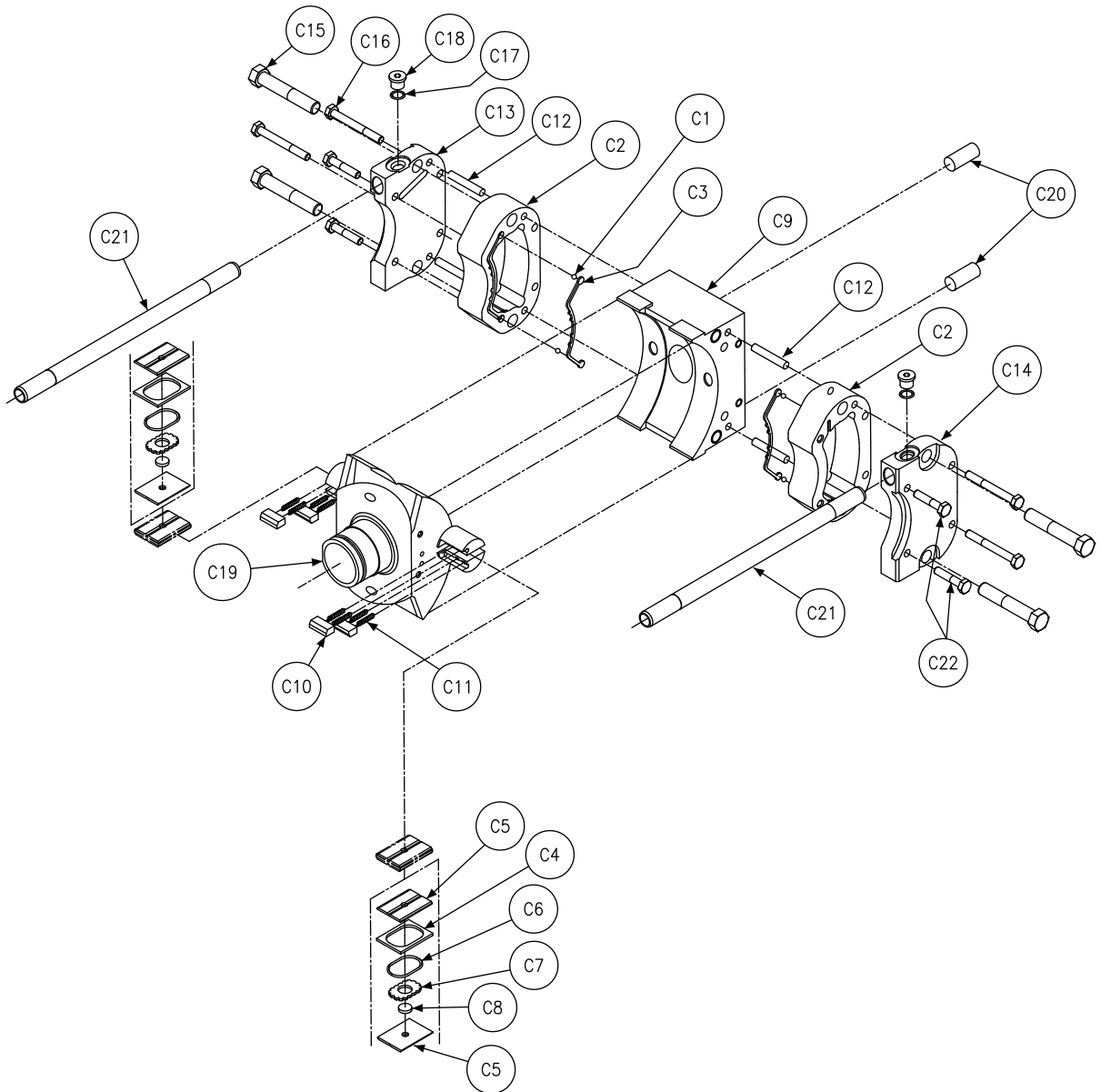


Pump Type
P/V/X/S/R/L
Motor Type
H/V/R/L



Section C 11/14 Cam and Cradle Assembly								
Balloon #	Pump/Motor	Type	Shaft Code	Rotation	Seal Code	Item #	Description	Qty
C1	P/M	P/V/X/S/L/R/H	2/3/7/8/9/10	**	**	201-06001-0	CHECK BALL	4
C2	P/M	P/V/X/S/L/R/H	2/3/7/8/9/10	**	**	033-71615-0	VANE CHAMBER	2
C3	P/M	P/V/X/S/L/R/H	2/3/7/8/9/10	**	1	606-25040-0	MOLDED SEAL	2
					4	606-25040-4		
					5	606-25040-5		
C4	P/M	P/V/X/S/L/R/H	2/3/7/8/9/10	**	**	033-71611-0	VANE SEAL	2
C5	P/M	P/V/X/S/L/R/H	2/3/7/8/9/10	**		033-71608-0	VANE SEAL BACKUP PLATE	4
C6	P/M	P/V/X/S/L/R/H	2/3/7/8/9/10	**	1	691-00125-0	O RING	2
					4	694-00125-0		
					5	695-00125-0		
C7	P/M	P/V/X/S/L/R/H	2/3/7/8/9/10	**	**	033-71607-0	VANE SPACER	2
C8	P/M	P/V/X/S/L/R/H	2/3/7/8/9/10	**	**	033-70803-0	CHECK VALVE	2
C9	P/M	P/V/X/S/L/R/H	2/3/10	**	**	033-57879-0	ROCKER CRADLE	1
			7/8/9			033-91712-0		
C10	P/M	P/V/X/S/L/R/H	2/3/7/8/9/10	**	**	033-72234-0	VANE HOLDDOWN	4
C11	P/M	P/V/X/S/L/R/H	2/3/7/8/9/10	**	**	033-72233-0	SPRING HOLDDOWN	8
C12	P/M	P/V/X/S/L/R/H	2/3/7/8/9/10	**	**	324-22428-0	DOWEL PIN	4
C13	P	P/D/V/X/S/L/R	2/3/7/8/9/10	CCW	**	033-71595-0	RIGHT CONTROL COVER	1
	P	P/D/V/X/S/L/R		CW		033-71598-0		
	M	V/H		N				
C14	P	P/D/V/X/S/L/R	2/3/7/8/9/10	CCW	**	033-71593-0	LEFT CONTROL COVER	1
	P	P/D/V/X/S/L/R		CW		033-71597-0		
	M	V/H		N				
C15	P/M	P/V/X/S/L/R/H	2/3/7/8/9/10	**	**	306-40189-0	HHCS 1/2-13 UNC X 3	4
C16	P/M	P/V/X/S/L/R/H	2/3/7/8/9/10	**	**	306-40140-0	HHCS 3/8-16 UNC X 2 3/4	4
C17	P/M	P/V/X/S/L/R/H	2/3/7/8/9/10	**	1	691-00905-0	O RING	2
				**	4	694-00905-0		
				**	5	695-00905-0		
C18	P/M	P/V/X/S/L/R/H	2/3/7/8/9/10	**	**	488-35020-0	HEX SOCKET PLUG	2
C19	P/M	P/V/X/S/L/R/H	2/3/7/8/9/10	**	**	S23-12107-0	CAM ROCKER	1
C20	P/M	P/V/X/S/L/R/H	2/3/7/8/9/10	**	**	324-23216-0	DOWEL PIN	2
C21	P/M	P/V/X/S/L/R/H	2/3/7/8/9/10	**	**	033-71609-0	OVERRIDE TUBE	2

P/M11/14 Cam & Cradle Assembly Kits Includes Items C1 Thru C22				
Pump/Motor	Type	Shaft Code	Rotation	Part Number
P	P/V/X/S	2/3/10	CW	S23-17240-0
P	P/V/X/S	2/3/10	CCW	S23-17241-0
M	H/V	2/3/10	N	S23-17240-0
P	P/V/X/S	7/8/9	CW	S23-18966-0
P	P/V/X/S	7/8/9	CCW	S23-18967-0
M	H/V	7/8/9	N	S23-18966-0