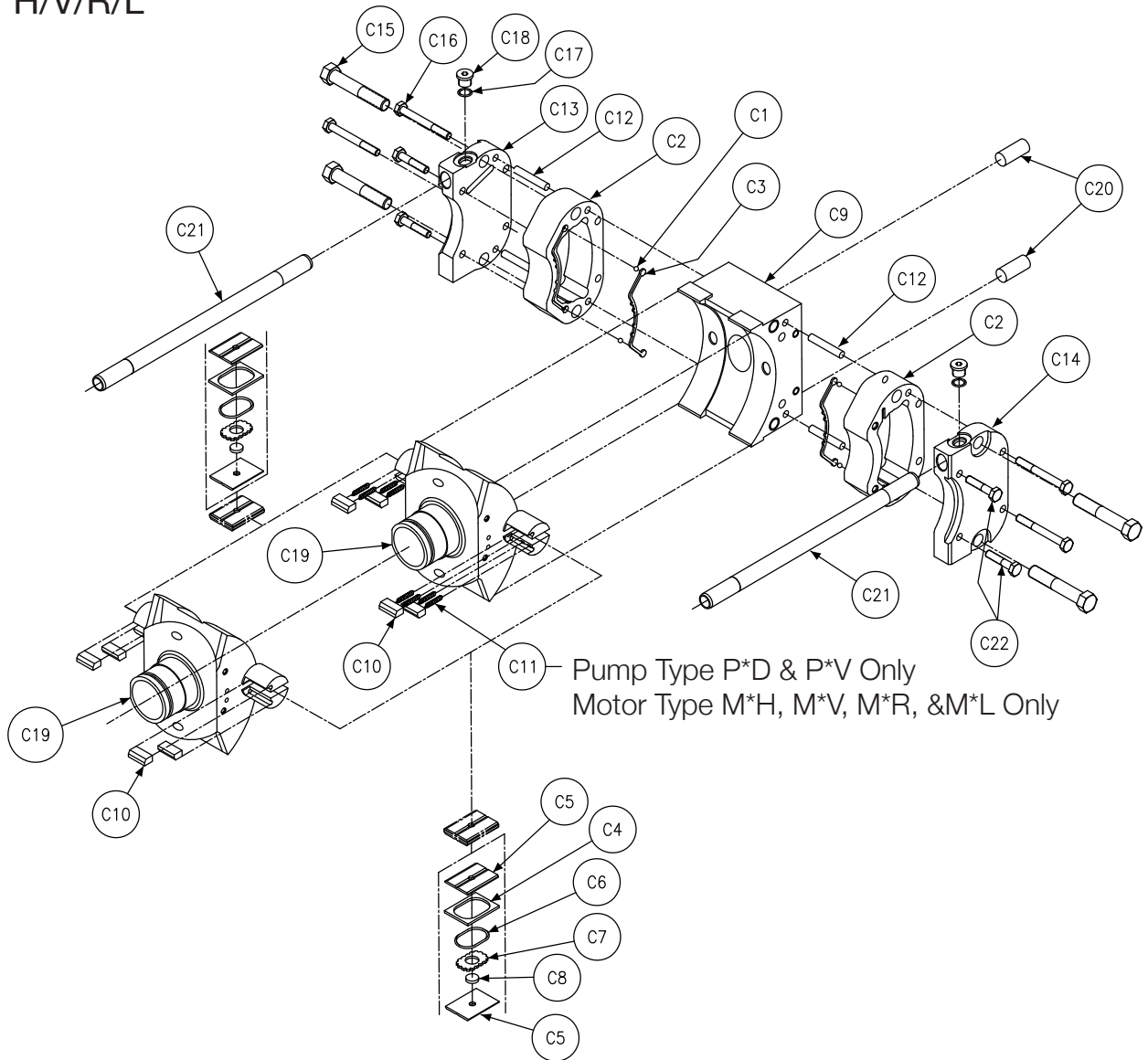


Pump Type
P/D/V/X/S/R/L
Motor Type
H/V/R/L



Section View - C - Cam & Cradle Assembly

Section C 6/7/8 Cam and Cradle Assembly								
Balloon #	Pump/Motor	Type	Shaft Code	Rotation	Seal Code	Item #	Description	Qty
C1	P/M	P/D/V/X/S/L/R/H	**	**	**	201-06001-0	CHECK BALL	4
C2	P/M	P/D/V/X/S/L/R/H	**	**	**	033-72266-0	VANE CHAMBER	2
C3	P/M	P/D/V/X/S/L/R/H	**	**	1	606-25036-0	MOLDED SEAL	2
	P/M	P/D/V/X/S/L/R/H			4	606-25036-4		
	P/M	P/D/V/X/S/L/R/H			5	606-25036-5		
C4	P/M	P/D/V/X/S/L/R/H	**	**	**	033-70501-0	VANE SEAL	2
C5	P/M	P/D/V/X/S/L/R/H				033-70802-0	VANE SEAL BACKUP PLATE	4
C6	P/M	P/D/V/X/S/L/R/H	**	1	**	691-00120-0	O RING	2
	P/M	P/D/V/X/S/L/R/H	**	4	**	694-00120-0		
	P/M	P/D/V/X/S/L/R/H	**	5	**	695-00120-0		
C7	P/M	P/D/V/X/S/L/R/H	**	**	**	033-70519-0	VANE SPACER	2
C8	P/M	P/D/V/X/S/L/R/H	**	**	**	033-70803-0	CHECK VALVE	2
C9	P/M	P/D/V/X/S/L/R/H	2/3/7/ 8/9/10	**	**	033-53951-0	ROCKER CRADLE	1
	P/M	P/D/V/X/S/L/R/H	4/5			033-92281-0		
C10	P/M	P/X/S/L/R	**	**	**	033-70816-0	VANE HOLDDOWN	4
	P/M	D/V/H	**	**	**	033-72232-0		
C11	P/M	D/V/H	**	**	**	033-72233-0	SPRING HOLDDOWN	8
	P/M	P/X/S/L/R				**	NOT REQUIRED	
C12	P/M	P/D/V/X/S/L/R/H	**	**	**	324-21624-0	DOWEL PIN	4
C13	P	P/D/V/X/S/L/R	**	CCW	**	033-70612-0	RIGHT CONTROL COVER	1
	P	P/D/V/X/S/L/R		CW		033-70572-0		
	M	V/H		N				
C14	P	P/D/V/X/S/L/R	**	CCW	**	033-705740	LEFT CONTROL COVER	1
	P	P/D/V/X/S/L/R		CW		033-70571-0		
	M	V/H		N				
C15	P/M	P/D/V/X/S/L/R/H	**	**	**	306-40183-0	HEX HD CAP SCREW	4
C16	P/M	P/D/V/X/S/L/R/H	**	**	**	306-40187-0	HEX HD CAP SCREW	4
C17	P/M	P/D/V/X/S/L/R/H	**	1	**	691-00904-0	O RING	2
	P/M	P/D/V/X/S/L/R/H	**	4	**	694-00904-0		
	P/M	P/D/V/X/S/L/R/H	**	5	**	695-00904-0		
C18	P/M	P/D/V/X/S/L/R/H	**	**	**	488-35001-0	HEX SOCKET PLUG	2



Section View - C - Cam & Cradle Assembly

Section C 6/7/8 Cam and Cradle Assembly								
Balloon #	Pump/Motor	Type	Shaft Code	Rotation	Seal Code	Item #	Description	Qty
C19	P/M	L/R	2/3/4/5/ 7/8/9/10	**	**	S23-12102-0	CAM ROCKER	1
	P/M	P/X/S	2/3/4/5/ 7/8/9/10	**	**	S23-12105-0		
	P/M	D/V/H	2/3/4/5/ 7/8/9/10	**	**	S23-12104-0		
C20	P/M	P/D/V/X/S/L/R/H	**	**	**	324-22412-0	DOWEL PIN	2
C21	P/M	P/D/V/X/S/L/R/H	**	**	**	033-70524-0	OVERRIDE TUBE	2
C22	P/M	P/D/V/X/S/L/R/H	**	**	**	306-40188-0	HEX HD CAP SCREW	4

Cam & Cradle Assembly Kits Includes Items C1 Thru C22				
Part Number	Pump/Motor	Type	Shaft Code	Rotation
S23-17234-0*	P	P/X/S	2/3/7/8/9/10	CW
S23-17235-0*	P	P/X/S	2/3/7/8/9/10	CCW
S23-17236-0*	P/M	D/V/H	2/3/7/8/9/10	CW-N
S23-17237-0*	P	D/V	2/3/7/8/9/10	CCW
S23-17238-0*	P	R/L	2/3/7/8/9/10	CW
S23-17239-0*	P	R/L	2/3/7/8/9/10	CCW

*NOTE: For Assembly Kits with Fluorocarbon Seals, order the Part Numbers with a -5 at the end instead of -0